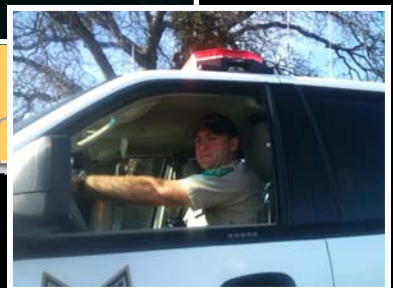
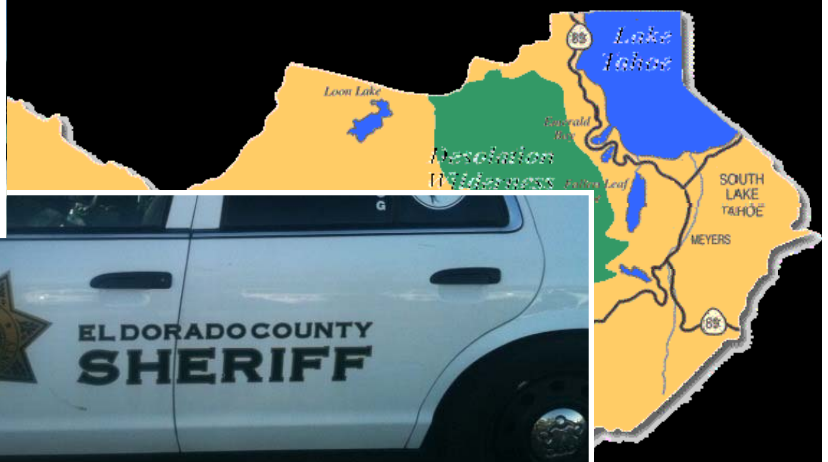




# EL DORADO COUNTY SHERIFF'S OFFICE

## 2010 Annual Report



*John D'Agostini—Sheriff-Coroner*



# TABLE OF CONTENTS

2010 ANNUAL REPORT

## TABLE OF CONTENTS

- Introduction**..... 4
  - Message from the Sheriff..... 5
  - Mission, Vision ..... 6
  - Organizational Chart..... 7
  - County Demographics & Facts..... 8
  - Sheriff’s Office at a Glance ..... 9
- Year in Review** ..... 10
  - Part 1 Crimes ..... 11
  - Criminal Records ..... 12
  - Domestic Violence ..... 13
  - Warrant Report..... 14
  - Records Report..... 15
  - Officer Involved Shooting, Use of Force, Casino-Related Crimes ..... 16
- Office of the Sheriff - Administrative Services**..... 17
  - Civil..... 18
  - Fiscal/Payroll and Public Administration ..... 18
  - Executive Secretary to the Sheriff ..... 19
  - Honor Guard ..... 19
  - Peer Support..... 19
- Support Services Division**..... 20
  - Background/Personnel Unit ..... 21
  - Community Service Officers ..... 21
  - Information Technology ..... 22
  - Vehicle Abatement..... 23
  - Coroner ..... 23
  - Training..... 24
  - Public Information Officer (PIO)..... 24
  - Office of Emergency Services (OES) ..... 25
  - Boat Patrol/Dive Team ..... 26
  - Search and Rescue (SAR)..... 27
  - Records ..... 28
  - Property/Evidence..... 28
  - Communications ..... 29

# TABLE OF CONTENTS



## TABLE OF CONTENTS

<b>Patrol/Investigative Division</b> .....	30
Patrol.....	31
Reserves.....	31
Warrant Detail.....	31
K-9.....	32
Explosive Ordnance Disposal (EOD).....	33
Special Weapons and Tactics (SWAT) Team/Crisis Negotiations Team (CNT).....	34
Gang Intel Detail.....	35-36
Parole and Community Team (PACT).....	36
Fleet.....	37
School Resource Officer (SRO) Program.....	37
Special Events Detail (SED).....	37
Dispatch.....	38
Alarms.....	39
Investigations.....	40
Crimes Against Persons Unit.....	40-41
290 Registrant Enforcement.....	41
Crimes Against Property Unit.....	42
Financial Crimes Enforcement.....	42
High Tech Crimes.....	43
Narcotics.....	44-45
Crime Scene Investigations.....	46
Crime and Intelligence Analysis Unit.....	46
<b>Custody Division</b> .....	47
Custody Services.....	48
Alternative Sentencing/Work Program.....	49
Custody Gang Unit.....	49
Transportation.....	50
Court Security/Bailiffs.....	50
<b>Special Programs/Community Service</b> .....	51
Sheriff's Team of Active Retirees (STARs).....	52
Citizen's Academy.....	53
Explorers.....	53
El Dorado County Multi-Disciplinary Team.....	54
Autism Registration.....	54
Lake Tahoe Secret Witness Program.....	55
Sheriff's Posse.....	56
Chaplaincy Program.....	56
<b>Sheriff's Office at Work</b> .....	57-60



# INTRODUCTION



## ***MESSAGE FROM THE SHERIFF***

On behalf of the men and women of the El Dorado County Sheriff's Office, I take great pride in presenting to you our Annual Report for 2010. This report highlights the organization's operations over the past year. It provides information on the work that is provided 24 hours a day, to our nearly 200,000 residents.



2010 was a fiscally challenging year for all. The El Dorado County Sheriff's Office has made and continues to make operational adjustments and improvements in efficiencies have allow us to maintain high levels of service in spite of budget reductions. We have increased our partnerships in the community and with allied agencies in order to better address community safety issues. This will be our practice well into the future.

In the coming months, we will be confronted with a serious fiscal crisis and declining budgets. Despite these uncertain times, every member of the Sheriff's Office remains unwavering in our commitment to seeing that our vision, mission and values are met. Challenge is something our office embraces, confronts and overcomes. During these difficult times, we will ensure that the safety of our residents is never compromised. On behalf of the El Dorado County Sheriff's Office, I would like to take this opportunity to thank the community members, the county Board of Supervisors, the county's leadership team, and the surrounding public safety agencies for their support.

Thank you for your interest in our annual report. I invite and encourage you to help us make El Dorado County a great place to live.

Sincerely,

John D'Agostini  
Sheriff ~ Coroner  
Public Administrator



## MISSION, VISION

### Our Mission

*"The mission of the El Dorado County Sheriff's Office is to uphold the law through the investigation and enforcement of criminal and civil law, to provide leadership and law enforcement support to allied law enforcement agencies, to deliver consistent and humane treatment to those placed in our care and custody, and to perform these responsibilities in a matter that is responsive to the needs of our community and faithful to the Constitution of the United States and the constitution of the State of California."*



### Vision

"A modern approach to traditional law enforcement values;

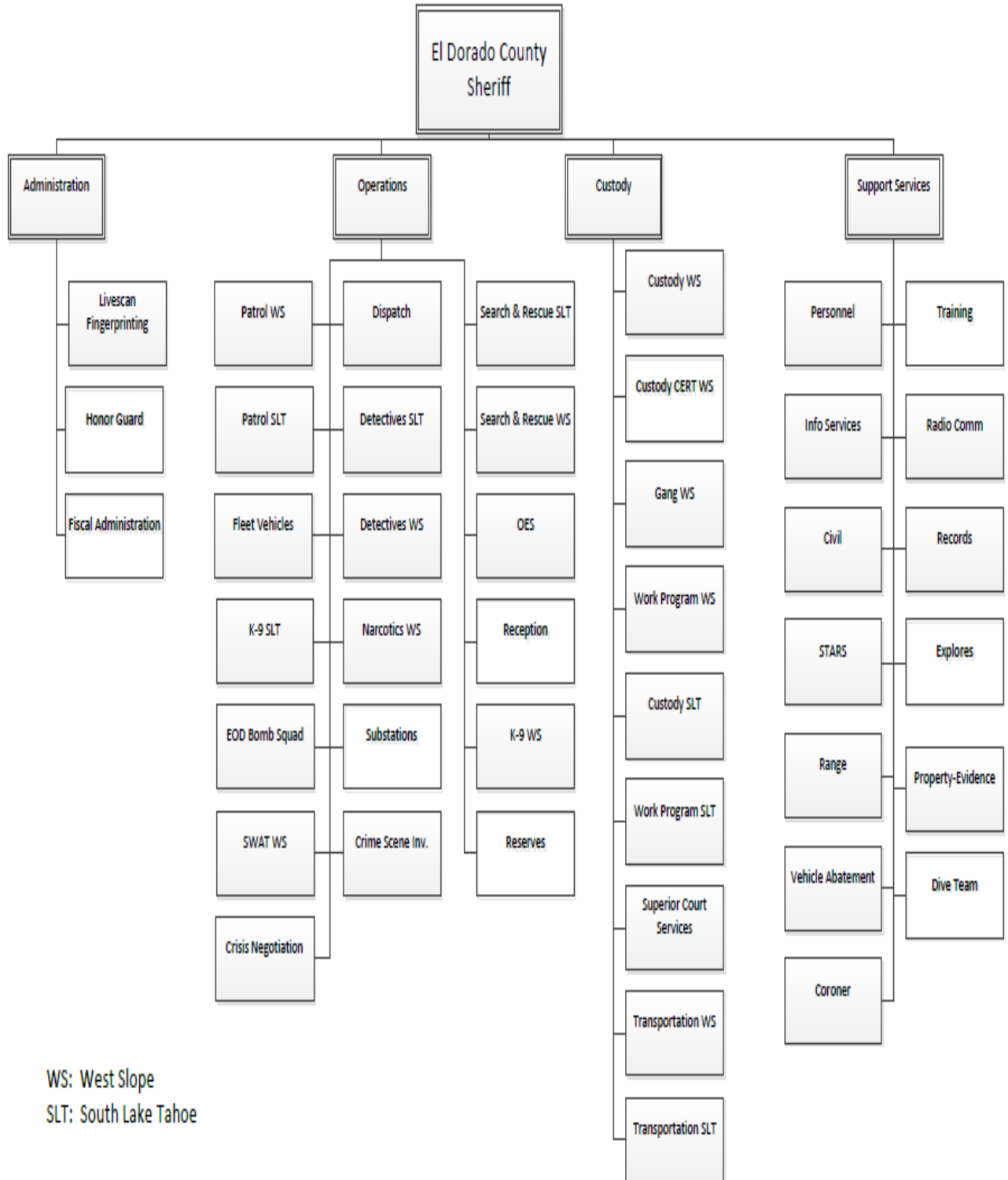
Total enforcement on crime and criminals;

Total care for victims, witnesses and the community;

Total professionalism, through training and by example"



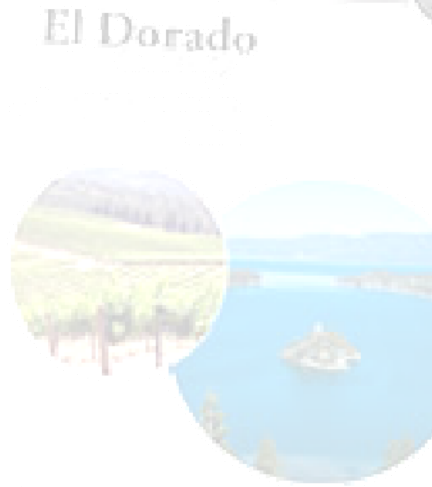
## ORGANIZATIONAL CHART



WS: West Slope  
 SLT: South Lake Tahoe

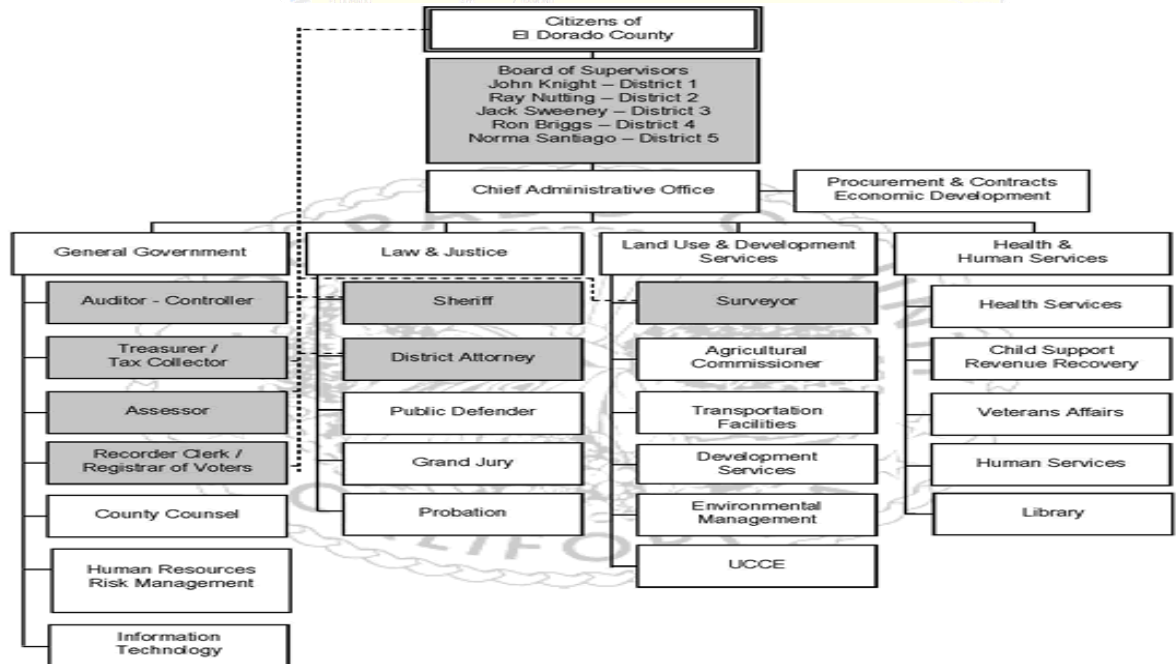
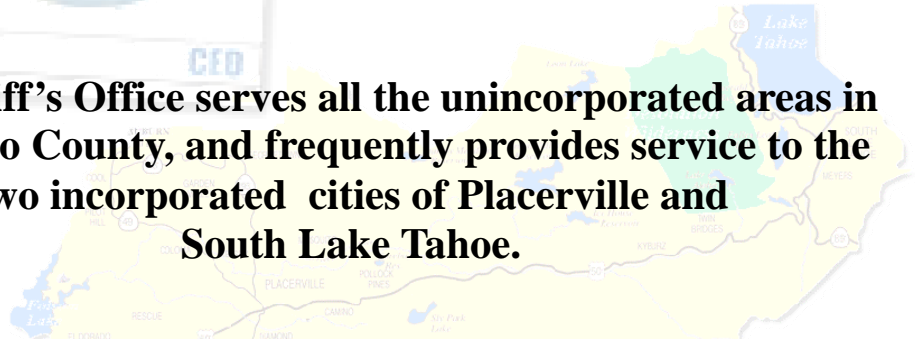


## COUNTY DEMOGRAPHICS/FACTS



Total Population:	<u>2009</u>	<u>2010</u>	<u>% Change</u>
	180,713	182,019	0.7
(Source: CA Dept. of Finance)			
El Dorado County Land Area:	1,711 Sq miles		
(Source: County Demographics)			
Sherriff's Patrol Area:	1,711 Sq miles		
	Divided into 5 Zones		

The Sheriff's Office serves all the unincorporated areas in El Dorado County, and frequently provides service to the two incorporated cities of Placerville and South Lake Tahoe.



Gray = Elected Official





## SHERIFF'S OFFICE AT A GLANCE

### Budget FY 09/10

Expenditures: \$51,654,675  
Revenue Received: \$11,841,496  
Net County Costs: \$39,813,180

Total Staff Positions:  
367 employees

### Departmental Personnel

#### Peace Officer Positions

Sheriff—Coroner	1
Undersheriff	1
Captain	3 ( +1 Unfunded)
Lieutenant	7 ( +1 Unfunded)
Sergeant	26
Deputy Sheriffs	140

#### Correctional Officer Positions

Correctional Lieutenant	2
Correctional Sergeant	12
Correctional Officer	77

Non Sworn Managers	4
--------------------	---

Professional Civilian Positions	94
---------------------------------	----

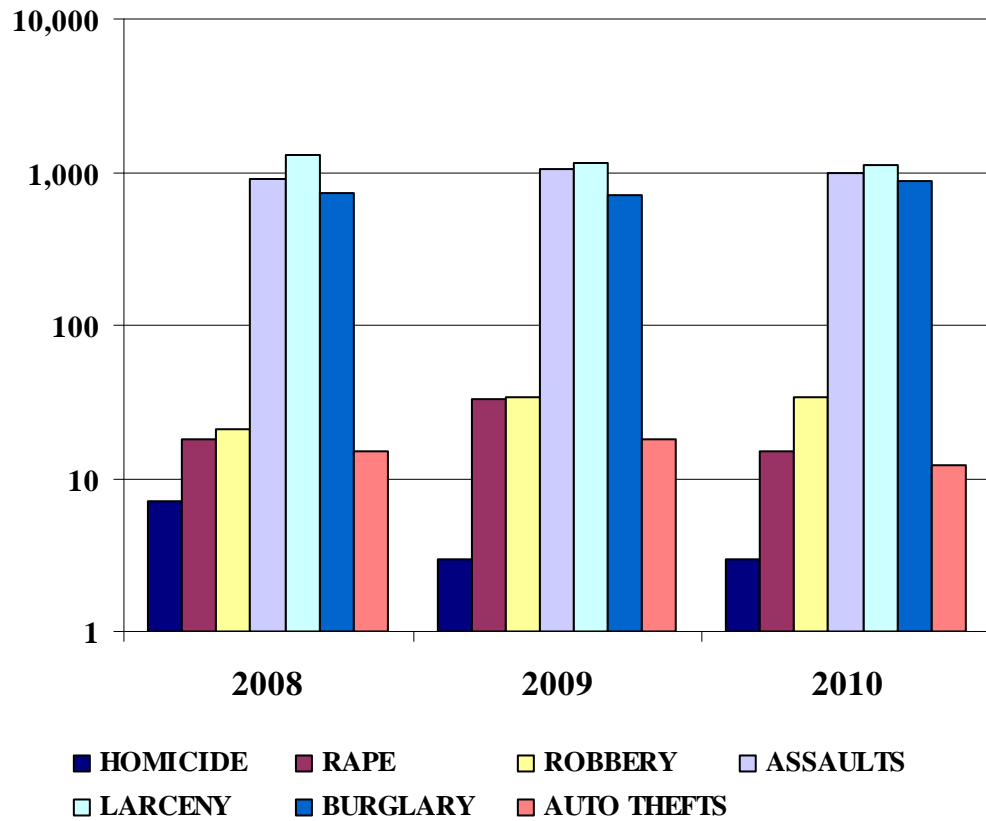


# YEAR IN REVIEW



## PART 1 CRIMES

	2008	2009	% CHANGE	2010	% CHANGE
<b>HOMICIDE</b>	7	3	-57	3	0
<b>RAPE</b>	18	33	83	15	-55
<b>ROBBERY</b>	21	34	62	34	0
<b>ASSAULTS</b>	893	1,033	16	976	-6
<b>LARCENY</b>	1,286	1,129	-12	1,114	-1
<b>BURGLARY</b>	738	715	-3	864	21
<b>AUTO THEFTS</b>	15	18	20	12	-33

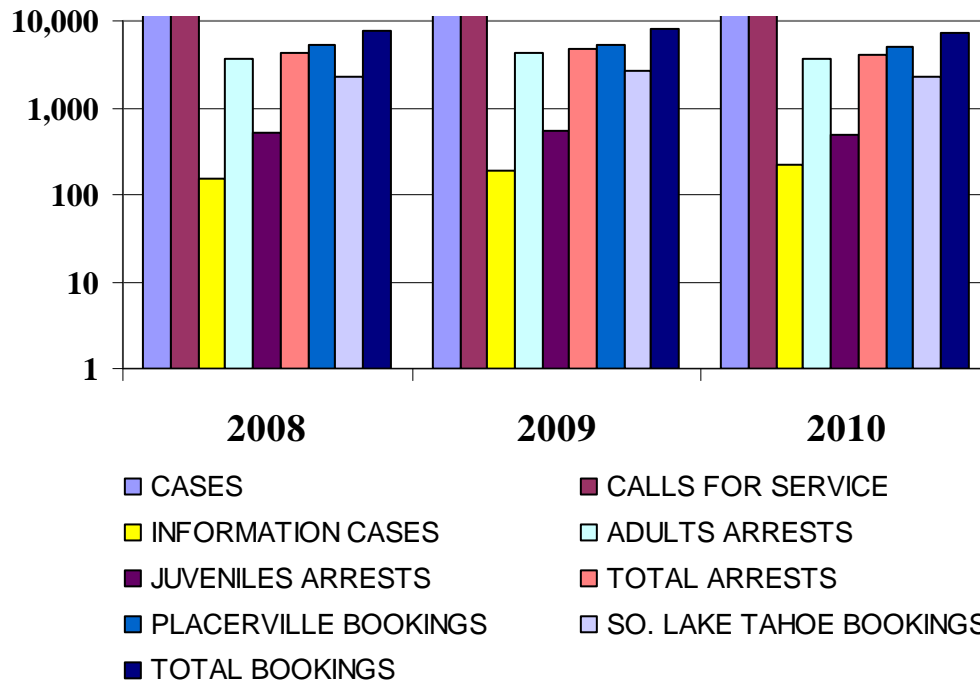


Criminal Records  
 Statistical report prepared  
 by Records Division



## CRIMINAL RECORDS

	2008	2009	% CHANGE	2010	% CHANGE
<b>CASES</b>	13,374	12,809	-4	12,157	-5
<b>CALLS FOR SERVICE</b>	79,967	80,317	0	74,141	-8
<b>INFORMATION CASES</b>	156	186	19	225	21
<b><u>ARRESTS:</u></b>					
ADULTS ARRESTS	3,701	4,197	13	3,651	-13
JUVENILES ARRESTS	510	534	5	501	-6
<b>TOTAL ARRESTS</b>	<b>4,211</b>	<b>4,731</b>	<b>12</b>	<b>4,152</b>	<b>-12</b>
<b><u>BOOKINGS:</u></b>					
PLACERVILLE BOOKINGS	5,216	5,411	4	4,954	-8
SO. LAKE TAHOE BOOKINGS	2,310	2,684	16	2,272	-15
<b>TOTAL BOOKINGS</b>	<b>7,526</b>	<b>8,095</b>	<b>8</b>	<b>7,226</b>	<b>-11</b>

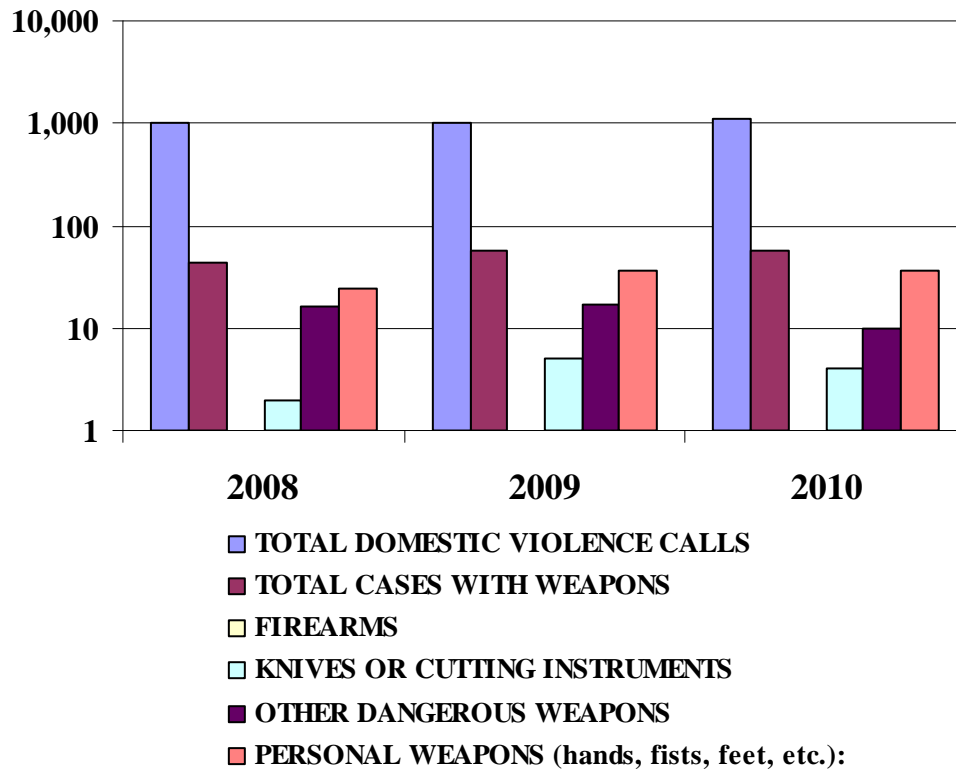


Criminal Records  
 Statistical report prepared  
 by Records Division



## DOMESTIC VIOLENCE

	2008	2009	% CHANGE	2010	% CHANGE
<b>TOTAL DOMESTIC VIOLENCE CALLS</b>	995	1,030	4	1,085	5
<b>TOTAL CASES WITH WEAPONS</b>	43	58	35	57	-2
FIREARMS *	1	0	-100	1	1
KNIVES OR CUTTING INSTRUMENTS	2	5	150	4	-20
OTHER DANGEROUS WEAPONS	16	17	6	10	-41
<b>PERSONAL WEAPONS (hands, fists, feet, etc.):</b>	24	36	50	37	3



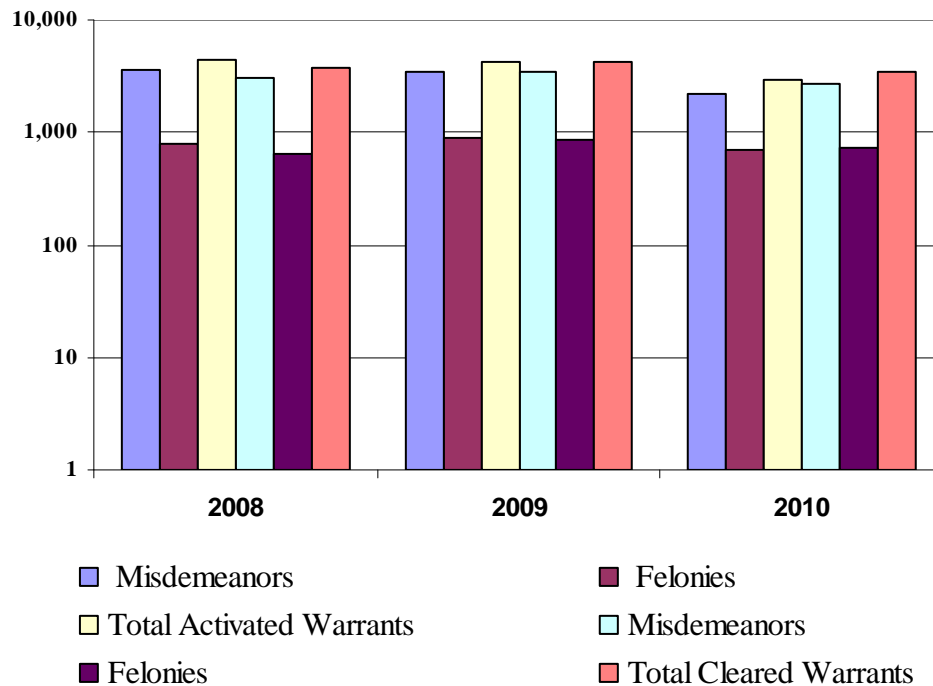
\*Negative or zero values can not be plotted

Criminal Records  
Statistical report prepared  
by Records Division



## WARRANT REPORT

	2008	2009	% CHANGE	2010	% CHANGE
<b>ACTIVATED WARRANTS</b>					
Misdemeanors	3,643	3,393	-7	2,239	-34
Felonies	800	881	10	705	-20
<b>Total Activated Warrants</b>	<b>4,443</b>	<b>4,267</b>	<b>-4</b>	<b>2,944</b>	<b>-31</b>
<b>CLEARED WARRANTS</b>					
Misdemeanors	3,064	3,469	13	2,655	-23
Felonies	643	842	31	733	-13
<b>Total Cleared Warrants</b>	<b>3,707</b>	<b>4,311</b>	<b>16</b>	<b>3,388</b>	<b>-21</b>



Criminal Records  
Statistical report prepared  
by Records Division



## RECORDS REPORT

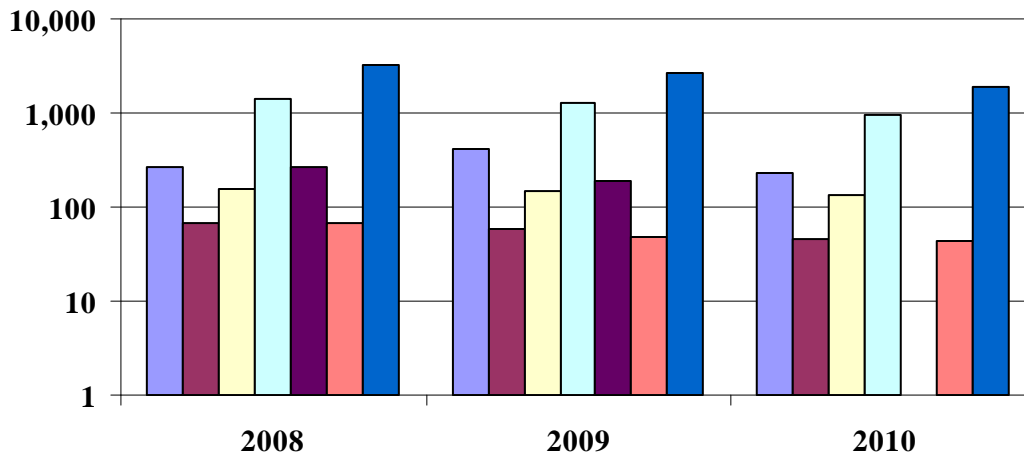
	2008	2009	% CHANGE	2010	% CHANGE
GUN PERMITS ISSUED ***	262	415	58	225	-46
CHRISTMAS TREE PERMIT TAGS	67	59	-12	46	-22
SEX, ARSON, DRUG REGISTRANTS *	153	145	-5	133	-8
COURT AND DV RESTRAINING ORDERS **	1,411	1,270	-10	967	-31
TOTAL PAWNS TICKETS RECEIVED	266	188	-29	0	-100
SUBPOENAS (records)	66	47	-29	44	-6
LIVE SCAN (electronic fingerprinting)	3,305	2,646	-20	1,899	-28

Totals include Tahoe

\* New registrants: 3 arson, 92 narcotics, 36 sex registrants, 2 gangs, total 345 sex registrants in county per Megan's Law as of 12/31/2010

\*\* New restraining orders: 557 domestic violence, 410 other (harassment, work violence, criminal protective orders, etc.)

\*\*\* Increases or decreases due to 2 yr. permit rotation



- GUN PERMITS ISSUED
- CHRISTMAS TREE PERMIT TAGS
- SEX, ARSON, DRUG REGISTRANTS
- COURT AND DV RESTRAINING ORDERS
- TOTAL PAWNS TICKETS RECEIVED
- SUBPOENAS (records)
- LIVE SCAN (electronic fingerprinting)

Criminal Records  
Statistical report prepared  
by Records Division



## OFFICER INVOLVED SHOOTINGS

2005	2006	2007	2008	2009	2010
1	1	3	2	0	0

## USE OF FORCE

2005	2006	2007	2008	2009	2010
44	41	28	18	18	12

## CASINO RELATED CRIMES

	2009	2010
<u>Crime Type</u>		
<i>Assault</i>	17	12
<i>Burglary</i>	7	5
<i>Theft</i>	30	40
<i>Controlled Substance</i>	7	25
<i>All Other</i>	73	105
<b>Total</b>	<b>134</b>	<b>187</b>





# ADMINISTRATIVE SERVICES



## ***Civil***

The Civil Section of the Sheriff's Office services the public by serving writs and bench warrants. A deputy sheriff will process court ordered evictions, wage garnishments, bank levies, and attachments to real and personal property.

### **Civil Activity in 2010**

#### **Placerville**

<b>Eviction Services</b>	<b>607</b>
<b>Levy Services</b>	<b>660</b>
<b>Misc Services **</b>	<b>685</b>

#### **South Lake Tahoe**

<b>Eviction Services</b>	<b>24</b>
<b>Levy Services</b>	<b>25</b>
<b>Misc Services **</b>	<b>133</b>

\*\* Misc services include, but are not limited to: warrants, domestic violence restraining orders, subpoenas, and other court documents.

## ***Fiscal/Payroll***

### ***Public Administrator***

The Fiscal Administration Section supports the operational divisions in the Sheriff's Office in areas including budgeting, accounting, payroll, procurement and contracting services. The Fiscal Administration Section also shares space and works collaboratively with staff from the Civil Section as well as the Assistant Public Administrator, who is responsible for administering the estates of people who die without a will or qualified person to administer the estate.



## ***Executive Secretary to the Sheriff***

The Executive Secretary to the Sheriff provides confidential administrative assistance to the Sheriff, the Undersheriff, and other supervisory and professional staff.

The Executive Secretary to the Sheriff has a working knowledge of department policies and procedures and provides assistance to other County Departments, outside agencies, community organizations, and the public with questions and concerns relating to the Sheriff's Office. Calls and visitors are screened, calendars and meetings are scheduled, all while maintaining a cohesive working relationship with all county departments, other agencies, the public, and sheriff's office staff.

## ***Honor Guard***

The Sheriff's Honor Guard consists of 12 deputies. This unit became active within the Sheriff's Office many years ago to conduct burial ceremonies for deceased active and retired personnel.

Throughout the years, the Honor Guard has conducted flag raising ceremonies for various schools and libraries. They have been present during Veteran's Day ceremonies and the Peace Officer's Memorial dedication every year in Sacramento. Throughout the year, the Honor Guard is often called upon to present the colors at various group organizations, and to attend the funerals of fallen law enforcement officers throughout Northern California.

### **Honor Guard**

**In 2010 due to Budget Constraints the Honor Guard only attended one out of state funeral in Washington and one local funeral for Sheriff's Office Sergeant Tim McNulty.**

The Sheriff's Honor Guard is strictly a volunteer unit. Each member is required to purchase their own dress uniform, costing upwards of \$1000. In 2009, M-1 Garand rifles were introduced to the Honor Guard. After receiving these rifles from the

U.S. Army, a local Boy Scout volunteered to refurbish each rifle as his Eagle Scout project. The rifles are now incorporated into the Honor Guard movements and are used while posting the colors, as well as the 21 gun salute at funerals.

## ***Peer Support***

The El Dorado County Sheriff's Office Peer Support Program has been recently developed by various classifications of employees. The purpose of the program is to assist personnel with stress created in their personal and/or professional lives. Quite simply, it is to support our valuable employees' well-being. This includes on and off duty support and referrals for colleagues during a crisis or other stress related matters.

### ***Peer Support***

- **Over 25 persons were provided support**
- **32% was casual contact that ended in peer support, 27% was initiated by a team member, 18% was employee requesting assistance and the remaining was by assignment or critical incident.**
- **28% was work related issues, 9% critical incidents, and 63 % personal related.**
- **55% were given referrals after contact.**
- **87% of contact have plans to meet again.**

The Team consists of employees who have a desire to assist colleagues with emotional support during stressful times. There is one lieutenant and two sergeants that act as Program Advisor and Program Coordinators. The Team is staffed with a Psychologist, three Mental Health Counselors, and three Chaplains. The majority of the Team consists of custody, patrol, records, and investigations. Currently, there are 24 Team members.



**SUPPORT SERVICES  
DIVISION**



## **Background/Personnel Unit**

### **Personnel Unit**

The Personnel Unit conducts all Sheriff's Office pre-employment testing. Upon submitting an application for a current recruitment and meeting the requirements for the position applied for, the applicant undergoes a testing process that may include:

- A written examination
- A physical ability test
- An oral interview

### **Backgrounds Unit**

The Backgrounds Investigation Unit is responsible for completing pre-employment background investigations on all Sheriff's Office employees.

The Backgrounds Unit is comprised of sworn investigators who conduct the pre-employment background investigations and non-sworn support staff who assist the investigators.

The background investigation process can be quite lengthy. Investigators thoroughly check an applicant's history by conducting interviews, making home visits, and reviewing records from several sources. They also make contact with references, former employers, schools, and other law enforcements agencies. Every effort is put forth to thoroughly screen all qualified applicants and hire only those who meet the El Dorado County Sheriff's Office standards and P.O.S.T. job dimensions.

Upon successfully passing a background investigation, an applicant may be given a conditional job offer of employment based upon passing psychological and medical examinations. This part of the hiring process is not always required, depending upon the position applied for.

<b>Backgrounds/Personnel Unit</b>		
	<u>Applications Processed</u>	<u>Backgrounds Completed</u>
Deputy Sheriff	83	22
Correctional Officer	203	6
Dispatcher	81	6
Sr. Sheriff's Tech	52	1
Sheriff's Tech	149	6
Correctional Cook	37	1
Fiscal Manager		1
Assistant CAO		1
Search & Rescue Volunteers		21

## **Community Service Officers**

There are currently eight Community Service Officers working throughout the Sheriff's Office. Units they are assigned to include: Investigations, Patrol, Dispatch, Backgrounds/Personnel, coroner, and the STAR office.

They each assist in facilitating specific needs to the department in which they are assigned. These duties may include administrative responsibilities, taking and writing reports from the public, transcribing interviews, coordination with outside agencies, working the front reception desk, doing research, maintaining vehicles for patrol, supervising inmate workers, processing pawn slips, coordinating STAR volunteers and a variety of other essential tasks needed by the units they provide support for.

Community service officers are a liaison between departments and outside agencies, and play an important role within the Sheriff's Office.

<b>Community Service Officer</b>
<ul style="list-style-type: none"> <li>• <b>1109</b> Initial reports written</li> <li>• <b>682</b> Supplemental reports written</li> </ul>



## Information Technology

Information Technology at the Sheriff's Office opened new frontiers during 2010. Staff is made up of 4 Systems Analysts and 1 IT Manager. Their focus has been on the front lines.

One of the more notable projects included an enhanced version of Mobile CAD. This enhancement allows patrol units to assign, arrive and clear calls electronically from their in-car computers. They can also indicate if they are going code 3 which will clear the radio for vital traffic. It has been tested and will be rolled out to all patrol units in the first part of 2011.

Another project included deployment of an enhanced version of Mobile Report System. This allows deputies to view case narratives and eliminate the lengthy synchronization process between the vehicle and the office. It also allows patrol supervisors to review, approve or reject reports without returning to the office.

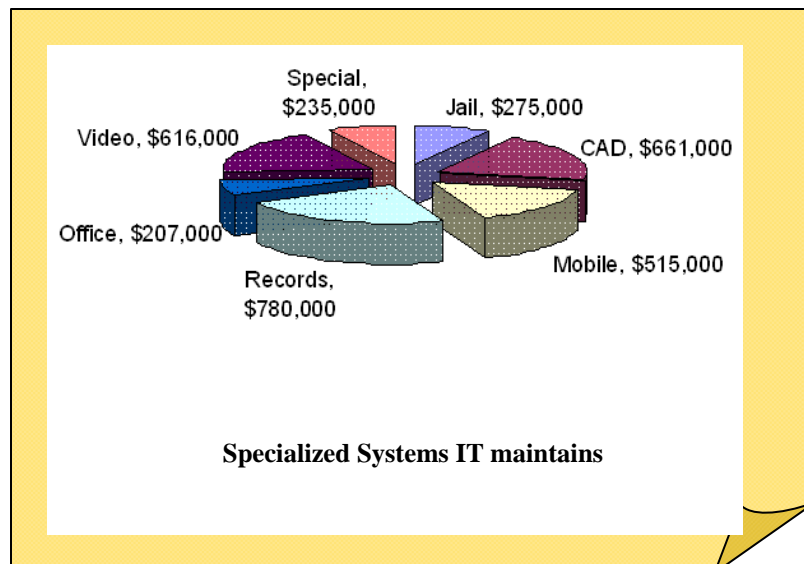
This year all marked units have been equipped with mobile cameras. These units automatically record from 3 camera positions and two audio tracks whenever a unit has its lights activated or the deputy initiates recording.

A new shift scheduling system was implemented for Patrol and Dispatch. It is hoped this will reduce overtime and make scheduling more efficient. Digital surveillance systems were also a

big project for 2010 and will receive significant attention in the coming years. These include fixed systems for locations such as the jail and mobile systems for investigations.

### Planned or Proposed Automation Projects

- Staff Scheduling
- In-car Video
- Fixed Surveillance Systems (Jail and lobbies)
- Mobile Surveillance System (Narcotic, Investigations)
- Automatic Vehicle Location
- EOC and Incident Management
- Mobile Access to Known Persons Databases
- Enhanced Mobile CAD for Voiceless Dispatch
- Enhanced Mobile Report Writing
- GroupWise Email Replacement
- Mobile Digital Computer upgrades
- DUI Report Module
- Criminal Justice Data Exchange interfaces with DOJ, Sac County, DA, PV, SLT
- Network Security Enhancements
- Grab'em Multi-Jurisdictional Field Biometric Identification System
- Spontaneous Volunteer Management System
- PC Refresh (approx 80)





## Vehicle Abatement

The vehicle abatement program is modeled after the State Statute authorizing Cities and Counties to adopt their own Ordinances to remove certain vehicles from public and private property. The City of Placerville, City of South Lake Tahoe and EDSO have entered into a Joint Powers Authority, (JPA). This authorizes all of these agencies to be reimbursement by the State for their programs. The vehicle abatement deputy responds to citizens complaints about vehicles possibly in violation of the County Ordinance.

The deputy evaluates the vehicle and places a tag on the vehicles which are in violation. The registered owner of the tagged vehicle and/or the property owner are sent a letter advising them of the violation. Ten days after the letter is sent, if the vehicle in violation has not been addressed to comply with the County Ordinance it is subject to be removed. Our contract tow companies remove and dispose of the vehicles in accordance with State law.

There is an appeal process if an individual believes their vehicle is not in violation or they dispute ownership. This is a public hearing and the hearing officer makes a ruling based on evidence provided.

Vehicles Abated			
	Public	Private	Total
Voluntary Abatements	208	296	504
Tows	45	74	119
<b>Total Abatements</b>	<b>253</b>	<b>370</b>	<b>623</b>

\*\*\* The Coroner's Division no longer takes "Hospice Cases," but occasionally we receive a Doctor's case from Patrol that was not properly reported by the family as a Hospice case (usually on graveyard). It is easier to remedy these instances by having the Coroner's Division process the report as a Hospice case, than trying to "undo" what has already been done.

## Coroner

### Organization

The Coroner Division is an investigative unit responsible for carrying out the statutory duties of the Coroner. Those duties include investigation into the circumstances surrounding all deaths falling within the Coroner's jurisdiction for the purpose of determining the cause, manner, and time of death. Medico legal death investigations are conducted county-wide on all homicides, suicides, accidents, suspicious, unattended and unexplained deaths. Other duties include establishing the identity of the decedent, notification of the next of kin, safeguarding personal property, and completion of mandatory records.

### Coroner Jurisdiction

The division is also proactive in the community, participating in programs aimed at reducing youthful drunk driving and drug use, identifying consumer products causing fatal injury, prevention of domestic violence, drug abuse and elder abuse, and providing education and training for the medical, legal, and law enforcement professionals. The Coroner also joins in a cooperative relationship with non-profit organ and tissue procurement agencies.

The El Dorado County Sheriff/Coroner Office is mandated by the California Government Code § 27491 et seq. to determine the circumstances, manner, and cause of sudden or unexplained deaths in El Dorado County.

CORONER STATISTICS	
(West Slope & South Lake Tahoe)	
<b>Total Cases:</b>	<b>428</b>
<b>Initial Report taken by:</b>	
Coroner's Division:	175 (41%)
Patrol Division:	253 (59%)
<b>By Type:</b>	
Homicide:	5
Doctor's Case:	197
Natural Causes:	115
Accident:	51
Suicide:	37
Hospice:	4*
Undetermined/Pending:	19



## **Training**

The El Dorado County Sheriff's Office has continued to progress in the area of training. We are offering 78 hours each year of documented and certified training. We have accomplished this while cutting the training and overtime budget with a savings to the County in excess of \$800,000.00. All areas of liability and areas for certification are covered each year. The training unit has continued to publish articles in local, state and national publications.

Crisis intervention training was completed for all employees during 2010. We are continuing to progress in the reporting and recognition of mental illness. Relationships continue to strengthen with community members and organizations within the county.

Critical Incident Debriefs continue to prove to be a positive for the agency. Debrief procedures are being adhered to on an incident driven basis. Future incidents will be reviewed and the long term effects on department members are expected to continue to improve.



## **Public Information Officers (PIOs)**

The public information officers serve as a liaison between the Sheriff's Office and the media. They write news releases, plan news conferences, and respond to inquiries from the media. They may escort reporters and photographers who come to the Sheriff's Office or other locations for interviews or photographs. Public information officers may be spokespersons, or they may serve as advisers to those who will appear on camera.

In addition to facilitating media stories, public information officers keep the public informed through direct communication. They assist in maintaining the Sheriff's websites and develop informational releases. Public information officers may also work with agency staff to gather information requested by a reporter or citizen. They may represent the agency at public meetings, and plan for the agency's presence at conferences and community events.







## Office of Emergency Services (OES)

### Mission Statement

The mission of the El Dorado County Office of Emergency Services is to train the people in El Dorado County to prepare for, respond to, and recover from emergencies that threaten life, property, or the environment.

### Operational Area

In 1994, the Board of Supervisors designated the Sheriff's Office responsibility for managing the County's Office of Emergency Services (OES). Sheriff's employees assigned to the OES work in collaboration with fire services, emergency medical services, hospitals, schools, and public and private agencies to implement preparedness programs, develop emergency response plans, and conduct training drills.

### Emergency Operations Center Activation Goals

Activation of the Emergency Operations Center facilitates the sharing of information and resources between the county, the Operational area cities, and other agencies. This allows EOC staff to efficiently:

1. Meet the immediate needs of people (rescue, medical care, food, shelter, clothing)
2. Work towards temporary restoration of facilities essential to the health, safety, and welfare of individuals (sanitation, water, electricity, road, street, and highway repairs), and meet the rehabilitation needs of people (temporary housing, food stamps, employment).



# SUPPORT SERVICES DIVISION



2010 ANNUAL REPORT

## Boat Patrol/Dive Team

The Boating Safety Unit is responsible for marine enforcement and rescue activities on all of the counties numerous waterways. This is accomplished by enforcement of County, State and Federal Boating Laws, vessel inspections, and public education.

We are extremely fortunate to have a group of deputies, both full-time and extra help, that are energetic, positive, and always professional in how they deal with co-workers and more importantly, the public. Our boat patrol deputies all have extensive experience, both in road patrol and boat patrol.

El Dorado County is unique in that we conduct a Whitewater Raft Patrol on a 20-mile stretch of the South Fork American River. This is one of few Whitewater Patrols operated by a Sheriff's Office in the nation. This patrol navigates over Class IV rapids and has contact with over 150,000 rafters during the rafting season which runs from May to September.

EDSO Boat Patrol personnel work anywhere from 20-40 hours a week, with all deputies working on Saturdays and Sundays. Deputies work off-setting schedules which allow for coverage from Thursdays to Tuesdays.

Extra help deputies are paid bottom step deputy pay, this is a reduction from top step deputy pay that they received a couple of years ago. While the bottom step pay does not take into account the increased training and responsibility that these positions require, the deputies continue to come out every summer, giving up their weekends with their families and friends.

These boat officers worked for the unit in past seasons and had the experience necessary to immediately go to work with minimal supervision. They are also responsible for the maintenance and care of the boats and unit equipment. This more than any other factor allows us to accomplish the mission of the unit.

### Boating Contacts (May –Sept)

Registration:	234
Display of #s:	9
Wearable PFD:	139
Alcohol Related:	4
Negligent Operation:	590
Reckless Operation:	72
Navigation rule violation:	191
PFD wearing violations:	102
Other violations:	74

**Total Number of Enforcement Contacts: 1415**

**Non-enforcement contacts: 355**



### Boating Safety Enforcement Activities (May –Sept)

Boat Patrol:	6174
Acc Investigations:	59
Searches:	101
Vessels Assisted:	212
Boating Safety Presentations:	15
Vessels Inspected:	6
Organize Water Events:	114
Drowned Body Recovery Att:	0

**Total Officer Hours: 6682**



## Search and Rescue

The El Dorado County Sheriff's Office provides a wide range of rescue services to the residents and visitors of El Dorado County.

### Mission Statement

*"We, the members of the El Dorado County Search and Rescue, in our mission to save lives, will provide the public with the most effective personnel and resources to search, rescue and disaster emergencies"*

Our mission of saving lives is accomplished through the support of trained volunteers and deputy sheriffs. Although the Sheriff's Office personnel coordinate the Unit, without the use of volunteers, an effective rescue team would not be possible.

All volunteer personnel are required to pass a variety of tests to become a team member. Such tests include FIRST AID, CPR, MAP AND COMPASS READING. Specialized Units require proficiency in CLIFF RESCUE/ROCK CLIMBING, SWIFT WATER RESCUE, HIGH ALTITUDE SCUBA DIVING and NORDIC SKIING. Along with having special skills, the SAR volunteers are required to participate in monthly training and are always subject to call-outs, often in times of darkness or during extreme weather conditions. The Tahoe Office has approximately 50 volunteers serving

the Basin.

Examples of typical rescue missions handled by the Unit are:

- Lost/injured skiers, both at resorts and back country.
- Plane crashes in wilderness or in lakes and/or ponds.
- Injured hikers on several peaks and in Desolation Valley.
- Stranded climbers on Lover's Leap.
- River rescues in local streams/streams.
- Diving accidents in Lake Tahoe or other lakes.

SAR Teams comprise of:

- Mounted Unit
- OHV
- Air Team
- High Angle - Swift Water Team
- Foot Trackers
- K-9's
- 4X4 Team
- Nordic Winter Rescue
- Search Management



## Search and Rescue

In 2010 SAR responded to 64 searches with over 150 volunteers responding.



## Records

The Records department processes reports from the records management systems, maintains detention files and manages the central warrants database for the county (except South Lake Tahoe Police Department). They maintain the restraining order system for the whole county, making the data entries into the state database. Records does fingerprinting and issuance of permits (CCW, itinerant, and secondhand dealer permits). They register drug and sex offenders, handle correspondence requests for reports or calls for service, and background checks for authorized agencies. They also maintain crime statistics for the department, sending monthly reports to the state.

There are eight Sheriff's Technician II and one Senior Sheriff's Technician that maintain the records section twenty-four hours, seven days a week. They perform a variety of complex technical and legal duties requiring them to examine documents for completeness, sufficiency, and conformity. They must be able to understand, interpret, apply, and explain relevant legal codes, laws, rules, regulations and procedures to do their work.

## Property/Evidence

The Property Section is responsible for the receipt, tagging, storage, retrieval and release or disposal of evidence and property. It is responsible for ensuring the maintenance of records on all evidence and property including "maintaining chain of custody."

### Records

- 225 Gun Permits Issued
- 133 New Sex, Arson, Drug Registrants Processed
- 557 New Domestic Violence Restraining Orders Processed
- 1,899 Live Scan (electronic fingerprinting)

Property personnel track the disposition of the case from receipt through the appeals process. Property personnel transport evidence between South Lake Tahoe and Placerville and to the Department of Justice, dispose of hazardous waste, dispose of marijuana and other drugs and oversee the disposal of crime guns and ammunition.

Property staff covers both South Lake Tahoe and Placerville offices and work closely with the District Attorney's Office, Records, Patrol, Detectives, other agencies, and the public. The job is both physical in nature and requires good office and computer skills. Property is currently staffed with three people.



### Property and Evidence

- 13,868 pieces of property received (which included 4,338 digital items)
- 10,392 pieces of property purged
- 373 guns received
- 367 guns relinquished/destroyed
- 932lbs of drugs destroyed
- 266lbs of bio hazard destroyed
- \$89,472.02 received
- \$69,592.73 rel/deposited



## Communications

The Communications Department is responsible for all Sheriff's Office communications as well as the rest of the county. Fire, EMS, DOT, probation, health, Environmental management., DA, transit, Placerville P.D. and public works.



They service most of the fire districts on both the east and west slopes, and build all of the marked and unmarked sheriff's cars for the east and west slope. They have 47 radio sites and also the 911 dispatch center to take care of. They have recently been asked to work on the City of South Lake Tahoe dispatch systems as well.



Service is provided to all P.A. systems in the county and the video system in Juvenile hall. If it is electronic and doesn't work, they get called. This is a 365 day 24/7 on-call operation that is staffed by one communications manager and 3 radio technicians.





**PATROL / INVESTIGATIVE  
DIVISION**



## Patrol

West Slope patrol is made up of 65 Patrol Deputies with 10 Sergeants, two Lieutenants, and One Captain. West Slope patrol is responsible for patrolling the unincorporated area of El Dorado County from Strawberry to the El Dorado / Sacramento County line, and from the North Fork of the American River to the Highway 88 / Consumes River border. Deputies assigned to patrol work three shifts to include days from 0600-1700, swings from 1400 to 0100, and graveyard from 2000 to 0700 hours. Through Patrol there are numerous collateral assignments that include: SWAT, EOD, Dive Team, Canine, CNT, Boat Patrol, OES / SAR, a two man SED Unit, a Field Training Program consisting of 6 FTO's and OHV.

Patrol for the Lake Tahoe office consists of 12 deputies (one of those positions is vacant), one Meeks Bay resident deputy, one K-9 deputy, five Sergeants and one Lieutenant. The Lake Tahoe office patrols the unincorporated area of El Dorado County from Strawberry east, to the South Lake Tahoe city limits and the Nevada state line and from Alpine county on the south to the Placer county line on the north. Deputies work one of two shifts; dayshift from 0600-1800 or graveyard shift from 1800-0600. The K-9 deputy works 1200-2400. Some of the deputies have collateral assignments in SAR, SWAT and CSI.

## Reserves

The Reserve program currently consists of two Reserve Deputy Sheriffs. One is the department certified Armorer/Rangemaster and he is actively involved in the training and qualification of all armed staff. The other is also the Senior Chaplain and he oversees the Chaplain program in El Dorado County, and he also participates in the peer support program

## Warrant Detail

The Warrant Detail consists of two patrol deputies who are selected from interested applicants for the one year rotational positions on the team. A Patrol Sergeant oversees the team as a collateral duty. The team meets with the two designated D.A. Investigators that are also assigned to the unit. The team goes out two days a month. No overtime is allocated for the Team.

The Team's purpose is to satisfy the due diligence requirements on mostly local warrants and to make the related warrant arrests. The team members obtain the warrants both from Sheriff's Records and from the D.A.'s Office. After obtaining the warrant information an effort is made to develop whatever information is available to locate the suspects.

On occasion the Team is asked to supplement Patrol or other agencies when there is a special need such as a probation search, search warrant or other major incident needing additional resources.

### Patrol

- 10,210 Initial reports written
- 4046 Supplemental reports written
- 225 Information cases written
- 2,275 Citations written
- 1592 Misdemeanor arrests
- 1080 Felony arrests

\* These numbers include South Lake Tahoe

### Warrant Detail

- 98 Arrests
- 260 Attempted services



## K-9 Unit

The El Dorado County Sheriff's Office Canine Unit was started in 1981 and has developed and professionalized since its inception.



The K-9 unit is comprised of four K-9 teams on the west slope and one K-9 team in the Tahoe Basin. Each K-9

team is crossed trained in both patrol functions and narcotics detection. Two of the west slope K-9 teams are SWAT & K-9's Interacting During Deployment School (SKIDDS) trained and work with the SWAT team and assist in SWAT missions.

The teams are trained in tracking, area searches, building searches, and handler protection. On a daily basis the K-9 unit assists patrol in responding to calls for service. The K-9 unit also assists patrol and narcotics detectives with narcotic searches. Narcotics detection means the K-9's are able to detect marijuana, methamphetamine, heroin, cocaine, opium, and ecstasy. Each year the K-9 team collectively assists in the apprehension of hundreds of wanted felony subjects generally with no use of force. The K-9 is the only tool that can be deployed on a suspect and then called off while in action.



The presence of a K-9 at a call is a deterrent that helps prevent people from fleeing or resisting arrest. The presence of a K-9 also prevents the deputies from having to place themselves in unnecessary danger to apprehend the subjects.

Each canine team is on call 24 hours a day to assist as necessary.

In addition to the K-9's daily functions the K-9 unit does multiple demonstrations throughout the county. These demonstrations take place at various locations including elementary, middle and high schools, the county fair and many other venues. These demonstrations give the Sheriff's Office and the K-9 unit an opportunity to interact with the citizens of the county in a positive manner.

### K-9 Unit

#### Total K-9 Officers

**Placerville - 4**

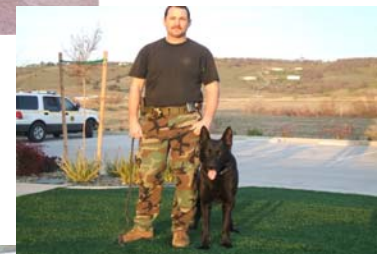
**South Lake Tahoe - 1**

#### Some Highlights

- Over 2,500 Calls for service K-9 teams responded to.
- Over 50 no-bite apprehensions
- 5 bite apprehensions
- Over 30 drug finds, with more than \$10,000 in drugs and \$50,000 in cash.



The K-9 unit is one of the Sheriff's Office elite units in patrol.







## Explosive Ordnance Disposal (EOD)

EOD's roll could best be described as "hazard mitigation."

EOD handles all manner of duties involving explosives from magazine inspections related to permits issued to found explosives, whether they be deteriorated blasting agents or improvised explosive devices. EOD personnel are trained to disable improvised explosive devices as well as deal with incendiary devices, weapons of mass destruction, and Haz-Mat situations, and they have trained to operate in all conditions from high angle to confined space.



Xray of grenade inside a wooden box dropped off at a Placerville Attorney's Office.

Additionally, the EOD unit provides a service to other specialty units beyond just EOD. The robot can be used to assist SWAT by remotely breaching, entering and clearing a building, forward observation, Break and Rake access, vehicle disabling, and downed officer retrieval. EOD can assist SWAT with explosive breaching to rapidly access a structure or to create gun ports or man-ways. The video feed from the robot can be recorded for documentation of critical incidents where there is no need to put additional personnel in harm's way and where those there are already set to task. The robot can assist CNT by delivering throw phones, or negotiations can be carried on directly through the robot. EOD can assist Detectives and CSI with investigations in this particular field of expertise, including post-blast investigation.

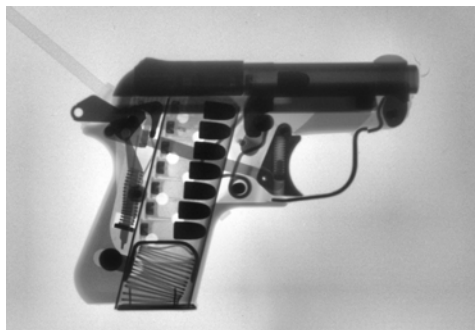
Our EOD unit is a part of the Sacramento Area EOD Unit, a regional collective made up of local, state, and federal agencies with regular input from military and private sector resources. This

keeps the unit and thereby the department, up to date on current trends in terrorism, hazardous devices used, and technological advances. Additionally it provides an immediate support network for additional resources and expertise. Much of EOD's equipment and training is federally subsidized. Grant funds are available to further the tools in our kit, and the unit is working towards bringing more useful technology to our department.



Improvised grenade located on a search warrant.

EOD Activity	
Found Explosives:	4
Suspicious Packages:	3
EOD Warrant Services:	1
SWAT Assists:	2
Non-Explosive AOA Requests:	1
Magazine Inspections:	2
Demonstrations:	4



Firearm, chambered and cocked, unable to be rendered safe (severely rusted). Explosively separated.



## SWAT/CNT

### Mission Statement

The El Dorado County Sheriff's Office Special Weapons and Tactics Team (SWAT) and Crisis Negotiation Team (CNT) are committed to resolving difficult police situations using strategies and tactics that emphasize control, containment and resolution with the goal of protecting life and property. The SWAT and CNT are committed to utilizing developed skills, tactics and specialized equipment and capabilities to resolve situations typically outside the realm of the ordinary patrol response.



The El Dorado County Sheriff's SWAT team was founded in 1979; today the team consists of 12 Entry Team Members, 4 Sniper Team Members and 2 SKIDDS Canines.

The SWAT Team utilizes three vehicles: an equipment van, a deployment SUV, and a pick up used for the Sniper Team.

El Dorado County SWAT Team members train an average of 15 hours per month. Each member must pass firearms and physical fitness proficiency tests to remain on the team.

The Crisis Negotiation Team (CNT) is a specialized team that is part of the Crisis Response Unit. The team is comprised of skilled verbal communicators who may be utilized to attempt to de-escalate and effect surrender in critical situations where suspects have taken hostages, barricaded themselves, or have suicidal tendencies.

In 2010, the CNT participated in a myriad of training scenarios, including simulated barricaded subjects, and negotiations. Although 2010 was a "slow" year for CNT utilization, the team was called to assist on three occasions. One of the incidents involved a "shots fired in a residence" call and the other two were to assist SWAT during high risk search warrants.



### JUST THE FACTS

#### Unit Size

- 12 Entry Members
- 4 Sniper Members
- 2 Tactical K-9
- 9 Crisis Negotiators

**2010 SWAT Deployments = 22**

**2010 CNT Assists = 3**



## Gang Intel Detail

The Gang Enforcement Unit (GEU) was established in 2004 to combat the growth of criminal street gangs in our communities. There have been significant increases in memberships in Hispanic gangs (primarily Norteno and Sureno), outlaw motorcycle gangs (OMG's primarily Hell's Angels and Vagos), white supremacy gangs, and most notably the Juggalos. Other groups of interest to the GEU are various extremist groups that have surfaced in our county, as well as close associates of known criminal street gangs. The GEU works in conjunction with the Custody Division Gang Unit and facilitates the El Dorado Gang Enforcement (EDGE) Task Force. EDGE is an informal task force that meets monthly and is comprised of staff from El Dorado County Sheriff's Office, Placerville Police Department, El Dorado County District Attorney's Office, and El Dorado County Probation Department.

The GEU is a five-member collateral unit and is comprised of two patrol deputies, one School Resource officer, one detective, and one sergeant. Although everyone is fully functional within the unit, two members specialize in Hispanic gangs and Juggalos, and two specialize in OMG, white supremacy, and extremists. This allows for increased development of expertise in particular gangs, as well as specific knowledge of gang members and their associates.

The GEU has three primary functions: intelligence, enforcement, and education. Identification of criminal street gangs, participants, associates, and



patterns of criminal street gang activity are the types of information sought. Additionally, the relationships between different gangs and their associates, and shifts in power, leadership, or

alliances are of critical importance. The collection and management of criminal street gang information is necessary to enhance officer safety, anticipate and curtail gang activity and violence, provide investigative information, and assist in the successful prosecution of criminal street gang participants. Intelligence gathering is continuous throughout all activities of the unit, with or without the enforcement component. The GEU has provided outside agency assists to Hollister, Reno, Sacramento, and others as part of a mutual regional intelligence gathering effort. The GEU participates in the monthly multi-agency intelligence meeting.

The Custody Division Gang Unit regularly assists the GEU with conducting surveillance and other Intelligence gathering operations in the field, as well as sharing information gleaned from in-custody classification interviews. They are key participants in regional and national intelligence sharing networks, both formal and informal. They also maintain the department's gang files.



The enforcement component includes conducting problem-focused enforcement details, such as Town Center, known gang parties or planned activities, OMG rides and events, or other activities that may draw the attention of gangs and their rivals.



## Gang Intel Detail (Continued)

The GEU conducts probation and parole searches on gang members and suspected gang members, conducts primary and follow-up investigation, serves search warrants, prepares gang related cases for prosecution, and offers expert testimony at trial. Gang member validations by Patrol are the responsibility of the GEU as well. Additionally, the unit assists Placerville Police Department with gang enforcement activities annually at the County Fair. Having an SRO in the unit has allowed for increased gang enforcement in the schools.

Another primary function of the GEU is education. The unit avails itself to various community service groups, town hall meetings, the Citizen's Academy, parent groups, and schools to give presentations and facilitate discussions about criminal street gangs and their activities. The SRO and GEU members have conducted training with school staff on gang trends, and they participate in a monthly meeting with all schools to share information, training, and ideas about all law enforcement issues affecting the schools.

There were fewer details worked by the GEU in 2010 than in 2009, specifically in an effort to reduce overtime costs. The GEU saw a slight decrease in gang activity in 2010 due to their heightened enforcement activity in 2009.

### Gang Unit Activity

<b>Gang Related Incidents:</b>	<b>31</b>
<b>Gang Crime Investigations</b>	<b>7</b>
<b>Gang Validations:</b>	<b>19</b>
<b>Search Warrants Served:</b>	<b>2</b>
<b>Undercover Operations:</b>	<b>4</b>
<b>Focused Enforcement Events:</b>	<b>4</b>
<b>Outside Agency Assist Events:</b>	<b>3</b>

These may include collaboration with the custody Gang Unit.

## Parole and Community Team (PACT)

The PACT Team consists of two deputies who are also selected from an applicants list. The positions are rotated annually. A Patrol Sergeant oversee the deputies who are assigned to the unit and coordinates their activities as a collateral duty. The Team meets one day a month, usually on the second Tuesday of each month. The Team members do a shift trade to cover the assignment, trading a regular patrol day for the PACT Team's meeting date. No overtime is allocated for these assignments.

The deputies assist State Parole with the parolees who are assigned to the Gold Country Parole Office and who reside in El Dorado County. Placerville Police Department also contributes one member of their department to assist. The day usually begins with a parolee orientation for recently released parolees. Our deputies interview each parolee at the conclusion of the meeting in order to obtain as much intelligence as possible about the parolees. The deputies then accompany the assigned parole officers while they attempt to locate and either reinforce the guidelines which are in place on each parolee or arrest Parolees at Large (PALS). They also contact parolees of interest to State Parole or the participating agencies. During this time searches are conducted, information is gathered and parolees are arrested for various charges stemming from the contacts as well as for parole violations.

The Team also on designated dates will do a Parolee sweep on a large scale with additional State Parole Officers and members of other agencies, canvassing a predetermined location in the county.

Lastly, like the Warrant Team the PACT Team will supplement other Sheriff's Office activities when the need arises.



## Fleet

Currently our marked patrol vehicles consist of 23 sedans and 6 SUV's. Additionally, we have 5 pool vehicles that consist of 4 sedans and 1 SUV. We are in our first 5 months of an assigned vehicle program. Two deputies are now assigned a vehicle to share. The patrol fleet is overseen by a sergeant and the Vehicle Committee that is comprised of 6 volunteer deputies. The Vehicle Committee oversees the daily vehicle operations that includes, but is not limited too, inmate vehicle detailing, parking lot clean up, daily logs and dissemination of vehicles that have been written up for service, vehicle movement and stocking trunks. A CSO oversees detective vehicles and special assignment vehicles.

## School Resource Officer (SRO) Program

El Dorado County has sixteen (16) individual school districts. The school districts service fifty nine (59) schools and twenty nine thousand six hundred and one students (29,601). The Sheriff's Office serves most of those schools with a "School Resource Officer (SRO)" program. The SRO program is comprised of two full time deputies and one sergeant. The sergeant supervises the two SRO's as a collateral duty.

The majority of the SRO workload is responding to daily requests for assistance from five (5) high schools: Union Mine, Ponderosa, Oak Ridge, Independence, and Charter.

SRO Program	
• Reports written	344
• Citations	136
• Bookings	38

The SRO's wrote over five hundred reports which included citations, crime reports, and arrests. SRO's also assist elementary and middle schools.

SRO's provide general law enforcement duties, security for sporting events and dances, and educational presentations to faculty and parents throughout schools in the county. Deputies regularly attend monthly county wide school and law enforcement meetings where information and trends within the schools are discussed and shared. In addition SRO's assist "School Attendance Review Board (S.A.R.B.)" and district expulsion hearings when needed.

## Special Events Detail (SED)

The Special Events Detail more commonly referred to as the SED Unit is comprised of two full time deputies. They are a multifunctional Team whose primary function is to support patrol in areas which cannot be routinely handled by the patrol deputy assigned to a beat. The duties

SED	
(The SED Unit has been in operation since August 2010)	
• Patrol assists	98
• Detective assists	31
• Traffic enforcement stops	107
• Citations issued	25
• Parole searches	40
• Probation searches	88
• Warrant services	42
• Field interviews	19
• Arrests	65
• Felonies	29
• Misdemeanors	33
• Undetermined	3
• Miscellaneous details	18

range in variety to include probation and parole searches, warrant service, assisting detectives, surveillances, security at functions where a need exists due to the presenter or the type of gathering, gang identification, 290 (sex registrant) checks, and a multitude of other functions.

The Team has received accolades from patrol sergeants and has been complimented from Chief Assistant District Attorney William Clark for their productivity.



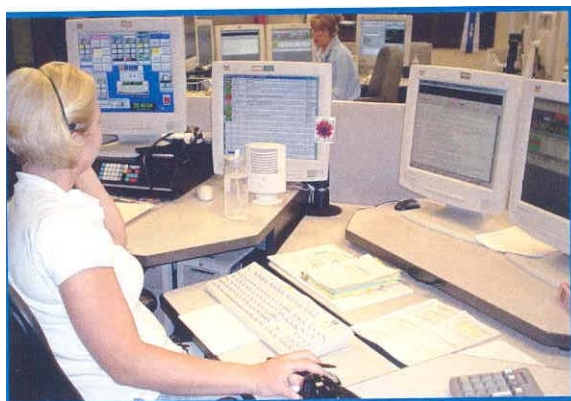
## Dispatch

Central Dispatch was formed in 1981 to provide the El Dorado County Sheriff's Office and other public safety agencies with radio dispatch services.

The dispatch center is one of three primary Public Safety Answering Points (or PSAP) in El Dorado County; all 9-1-1 telephone calls placed from hard-line phones within the unincorporated areas of El Dorado County are directed to Central Dispatch. As a secondary PSAP, Central Dispatch receives 9-1-1 calls transferred from other agencies, including wireless 9-1-1 calls.

Using complex Computer Aided Dispatch & 9-1-1 telephone systems, both emergency and non emergency calls are received, logged, and either directed to sheriff's deputies out in the communities of our county or relayed to other county or state resources.

El Dorado County is currently working with the California Highway Patrol to route wireless 9-1-1 calls originating from primarily residential areas directly to Central Dispatch.



## Dispatch

### Call Totals

74,141 Calls For Service  
36,240 9-1-1 & Emergency  
telephone calls received  
108,720 Non-emergency calls (approx.)

### Most Common Calls For Service

9,622 Traffic  
5,564 Medical Assists  
4,359 Alarm Activations  
4,017 Follow-ups  
3,908 Burglary  
3,784 911 hang-ups  
3,526 Suspicious subjects  
3,191 Relay (to other agencies)  
2,226 Suspicious Vehicles

### Dispatch Staffing

16 Dispatchers  
5 Training dispatcher  
4 Supervisors  
1 Manager

Staffing levels: from 3-6, depending on time of year, day of week, and, time of day.

### Dispatch Facts

- Average of 2,834 9-1-1 calls per month, with July and December the busiest.
- 87% of emergency calls answered within 0-5 seconds of receipt.
- 35% of 9-1-1 calls received between 2:00PM & 8:00PM, making this the busiest period.
- 56% of 9-1-1 calls are between 0-60 seconds in duration.

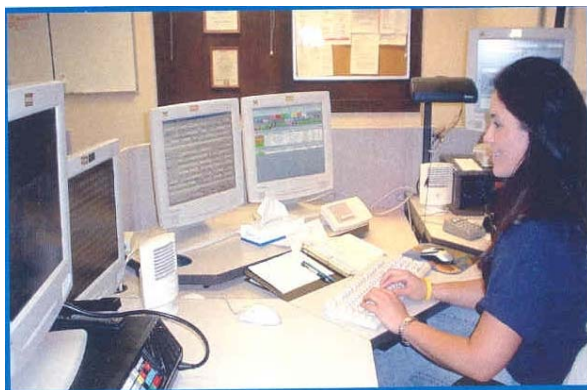


## Alarms

In March 1981, El Dorado County passed Ordinance No. 3115, regulating the use of criminal alarms. Under this ordinance, all alarm users, both residential and commercial, are required to have a permit to operate an alarm. The purpose of regulating alarms is to reduce the number of false alarms the El Dorado County Sheriff's Office responds to, by providing a means of control over misused systems.

The enforcement and administration of this ordinance falls to the Manager of Public Safety Dispatch via a Community Service Officer. The CSO is assisted by two STAR volunteers at 7 hrs each week and by the dispatch manager at 8-10 hrs each week.

The CSO works an average of 22 hours of overtime each month just to maintain the status quo. Long term projects of document scanning and proactive enforcement of the ordinance have all but been abandoned due to lack of manpower.



## Alarm Facts

- 24 alarm activations with evidence of crime (crime reports taken)
- 7,000 active alarm permits
- 2,547 inactive alarm permits (currently closed out but could become active)
- 1,900 alarms without permits (activations at a location where there is no permit, which represents \$57,000 in lost revenue for 1 time new permit fees(\$30) and an additional \$2,850 in annual renewal fees (\$10 & \$25).
- 4,359 alarm activations received by Central Dispatch (of which 99% were determined to be false in nature).
- Average of 750 transactions each month results in an average deposit of \$8,000.



## ***Investigations***

The Investigations unit for the El Dorado County Sheriff's Office is normally comprised of 14 detectives, two detective sergeants, one lieutenant, one CSO and one crime and intelligence analyst. These investigators are all seasoned and highly trained to handle all major felonies occurring within the county. The investigative unit consists of detectives assigned to investigate all crimes against persons, as well as crimes against property.

## **Crimes Against Persons Unit**

The Crimes Against Persons unit currently consists of seven detectives. Four of these detectives have extensive experience and training involving death investigation. They handle all homicide investigations, officer involved shootings, cold case homicides, suicides involving a firearm and all other unexplained and suspicious deaths. In addition to these types of investigations, these four detectives also investigate robberies and all other violent assaults. Numerous robberies, both armed and strong-armed were investigated in 2010.

2010 proved to be a slower than normal year for the investigative unit. Three homicides occurred within the county. Investigators worked diligently on other homicides from years past, throughout 2010. Homicide investigation, including cold case homicide investigation, can take many months and often years to complete. Continued work occurred throughout the year on numerous homicide cases from 2005, 2008, and 2009, as well as cold cases dating back to 1979 and 1981.

In 2010 two highly publicized homicide cases were adjudicated. The murder of Ron Presba by his wife and her boyfriend received national attention. Investigators worked hundreds of hours trying to piece this bizarre incident together, eventually traveling to Salt Lake City, Utah and obtaining confessions from both defendants. Subsequently, one received 50 years to life and the other received 25 years to life for this murder.

One other heinous crime that came to a close in 2010 was the murder of a 2 year old boy by his father, Charles Bailey. Once again detectives worked around the clock, attempting to locate the

suspect and his son. Detectives got the confession from the defendant and located the deceased child. The defendant received a life sentence without the possibility of parole.

Our Crime Analyst works closely with our detectives, helping to develop leads and prepare documents that are used during court testimony.

Two investigators form our Sexual Assault Unit. They conduct investigations on sexual assaults on adults, as well as children. They also investigate any child abuse allegations and work closely with the District Attorney's Office. Numerous assault/abuse cases were successfully prosecuted in 2010.

These type of cases must receive immediate attention, especially when dealing with children. Detectives do not have the luxury of getting to each case when they get time. Because of their heavy case load, these two investigators obtain assistance from one other investigator who helps out with overflow of cases.

In addition to assisting the sexual assault investigators, this particular investigator handles all missing persons, follow-up for domestic violence cases, and other violent crimes against persons.

Many of the cases the Crimes Against Persons unit has dealt with over the years have been given national attention. Many of these cases are pending trial and still require follow-up investigation. Because of the expertise this unit has developed over the past twenty years, other outside law enforcement agencies request their assistance. Surrounding law enforcement agencies have consulted with our homicide detectives who have solved and successfully prosecuted murders where the decedent was never located.

Due to their limited resources, the Placerville Police Department has requested assistance from the Crimes Against Persons unit, as well as the Sheriff's Office's CSI unit on many occasions.





The Crimes Against Persons Unit is on-call 24 hours per day, including weekends and holidays. A typical call-out for this unit usually means working 18 hour days, or more. This always means time away from their families and personal lives. This is a testament to the dedication of the individuals assigned to this unit and their commitment to protect and serve the citizens of El Dorado County.

### Crimes Against Persons Unit

- **454 Cases Investigated**
- **24 Initial reports written**
- **410 Supplemental reports written**
- **5 Cold Case Homicides still actively being investigated.**

The Sherriff's Investigations unit has one Community Service Officer (CSO) assigned. This individual handles all secretarial responsibilities, assisting the investigators. Much of this CSO's time is spent transcribing audio interviews of suspects, as well as victims. The Internal Affairs unit will also call upon this CSO to transcribe their confidential interviews.

Other daily duties include the research, organization, then entering of all child and adult abuse reports that come to the investigations unit daily. This CSO must also enter and organize all pawn slips, research suspect information for investigators out in the field, complete statistics for identification theft, organize performance evaluations on investigators and complete any correspondence as needed.

In addition to all of these responsibilities, some of the most important and time consuming duties include answering telephones, disseminating mail, ordering supplies, helping to organize the Citizen's Academy, and serving as a liaison between the investigators and the public.

### 290 Registrant Enforcement

Members of the El Dorado County Sheriff's Investigation Division, along with investigators from the El Dorado County District Attorney's Office, El Dorado County Probation Officers and State Parole Officers, engage in a monthly enforcement effort (manpower permitting) targeting sex registrants in the county.

The primary goal of this enforcement effort is to locate and take into custody sex registrants who are out of compliance. Typical violations include failure to register and residing at a residence other than that which they have registered.

The secondary goal of this enforcement effort is to conduct compliance checks of sex registrants. Members of the various teams conduct "knock and talks" with the registrants to verify they are residing where they have registered. Often members are allowed, by the registrants, to conduct searches of the residences and properties to verify there is no criminal activity afoot. Investigators also have audio recorded discussions with the registrants about their registration requirements per Penal Code section 290 (to be used as evidence in the event there is a future violation).

Information is gathered from the El Dorado County Crime Analyst, tips from the Megan's Law website and citizen complaints prior to the enforcement effort. This information is processed and target lists are established.

### 290 Sex Registrants

**346 Sex Registrants in the county**

**Enforcement Sweeps are done Monthly**



## Crimes Against Property Unit

The Crimes against Property unit currently has three investigators assigned to handle property related crimes occurring on the west slope of El Dorado County. There is currently one investigator assigned to South Lake Tahoe. These crimes include, but are not limited to, residential, commercial, and vehicle burglaries and all other thefts. The case loads can be overwhelming at times and seem to increase daily. Throughout this past year, we have seen an increase in reported thefts countywide. Property Crime Investigators are constantly in the field, contacting victims, searching for evidence and following up on cases with active leads. This can sometimes be a daunting task, especially since losing a position in 2009.

In addition to investigating these type of crimes, the investigators often meet with community groups and neighborhood watch personnel, educating them on measures to secure their homes, businesses, and communities while keeping a watchful eye and reporting suspicious activity.

With only three investigators to handle the western slope and one in Tahoe, we have encouraged community assistance and rely heavily on patrol personnel to follow up on investigations, playing a larger role than ever before.



## Financial Crimes Enforcement

The Crimes against Property unit also has one investigator assigned solely to financial crimes. This investigator will conduct investigations on counterfeiting, forgery, identification theft,

embezzlement, fraud, and obtaining property under false pretenses. Each year the cases involving identity theft and internet scams seem to increase. 2010 was no different. These type of crimes can be a challenge, as the victim will reside within El Dorado County, while the suspect can be anywhere in the world.

These investigations require coordination with outside jurisdictions and many hours of follow up. This unit is also down one investigator from 2009. However, in 2010 the property crime section had great success in solving many burglaries, resulting in numerous convictions and returning thousands of dollars in stolen property back to the rightful owners.

To say the investigators assigned to the Property Section have a huge case load is an understatement. As drug related crimes increase and the economy continues to decline, property related crimes are certain to increase every year. In addition, each investigator is responsible for on-call once every twelve weeks, stretching the unit's limited resources.

The investigators assigned to this unit are a group of professional self-driven individuals, dedicated to solving crimes and educating the citizens of this county to prevent them from becoming future victims.

### Property Crimes Unit (West Slope)

- 1553 Cases Investigated
- 53 Initial reports written
- 945 Supplemental reports written
- Over a dozen community group and neighborhood watch talks given.

### Property Crimes Unit (South Lake Tahoe)

- 39 Cases Investigated
- 60 Initial reports written
- 161 Supplemental reports written



## High Tech Crimes

The High-Technology (High-Tech) investigations unit consists of one full-time investigator and one part-time investigator. This unit supports not only the Investigative Division but the entire county in several aspects, including, in-depth forensic analysis of computers, cellular telephones, surveillance systems, still and video cameras, the defeat of passwords or encrypted files, and tracking of internet related crimes across the World Wide Web. Many of these analyzed devices have become crucial evidence in high-profile investigations such as homicides, child molestation, kidnappings, suicides, identity theft, burglaries, large scale fraud, and narcotics. The High-Tech investigators also assist with in-progress investigations, leading to the identity of suspects, preservation of evidence, or providing real time information.

High-Tech investigators are recognized in the community and among many civic groups. High-Tech investigators routinely speak at schools in El Dorado County about cyber safety, music and movie piracy, and cyberbullying. These educational presentations are also given to parents, teachers, and senior citizens at various venues. The High-Tech Investigators are also known for expert testimony in court and provide, in an age of crime scene investigations shows and enthusiasts, tangible evidence that speaks directly to the conduct of those on trial. The High-Tech investigators from the El Dorado County Sheriff's Office are the only such trained investigators (working in law-enforcement) in this county. The unit assists outside agencies such as the South Lake Tahoe Police Department, Placerville Police Department, the California Highway Patrol, United States Forestry Service, Bureau of Land Management and County Fire Agencies with numerous High-Tech related investigations.

High-Tech investigators from El Dorado County Sheriff's Office benefit from a working relationship with the Sacramento Valley High-Tech Crimes Task Force and the Internet Crimes Against Children (ICAC) Task Force that is incorporated into it. These task forces work with the Federal Bureau of Investigations (FBI) and are supplemented with equipment, training, and abundant resources as a result. As members, task force officers are dually sworn (deputized) federal

agents with the FBI and have Top-Secret clearance with the federal government. As task force officers, these High-Tech investigators can represent the El Dorado County Sheriff's Office in filing of cases/charges in Federal District Court and expand the jurisdiction of agency investigations. This expanded ability has greatly improved the prosecution of offenders in El Dorado County and thwarted the efforts of criminals to operate across jurisdictional lines with anonymity.

As members, the department and investigators receive critical funding, skilled and highly sought-after training, collaborative assistance from other investigators, and specialized equipment. The training received over the eleven years of experience between the two investigators, if modestly calculated, exceeds a value of \$75,000 dollars. The equipment inventory currently held by these investigators is estimated to exceed \$50,000 dollars, a majority of which is supplied by the Task Force.

<b>Task Force Participation</b> (These include Hi-Tech Crime, Identity Theft, and Internet Crimes Against Children ICAC Investigations)	
<b>Investigations=</b>	166
<b>Forensics=</b>	32
<b>Presentations=</b>	18
<b>Search Warrants=</b>	30



## Narcotics

### WENET

During the 2009/2010 fiscal year the Western Slope El Dorado Narcotics Enforcement Team (WENET) received funding of approximately \$35,000 for the enforcement of Narcotic Laws from the Drug Enforcement Administration's (DEA) Domestic Cannabis Eradication / Suppression Program (DCE/SP), \$20,000 from the United States Forest Service (USFS), \$171,000 from the California Multi-jurisdictional Methamphetamine Enforcement Team (CalMMET), \$128,000 from the United States Department of Justice (USDOJ) Organized Crime Drug Enforcement Task Force (OCDETF) and \$200,000 from the El Dorado County asset forfeiture fund. A Majority of the above listed funds are utilized to pay the cost of Narcotic Investigators wages and overtime.

Members of the Sheriff's Office Patrol Division are adequately trained and equipped to conduct overt investigations, such as parole and probation searches for the purpose of enforcing controlled substance laws. However, WENET is the only unit within the Sheriff's Office that is trained and equipped to conduct covert undercover investigations.

With this in mind, the primary duty of detectives within WENET is to follow up on information received that requires covert undercover



operations, and investigation. WENET detectives' second priority is to locate and cultivate confidential sources that can supply information that will be utilized to initiate investigations that require covert undercover operations.

WENET detectives' third priority is to conduct those overt investigations, which can also be conducted by other units within the Sheriff's Office, such as knock and talks, probation searches and parole searches. Narcotics detectives must be proactive and have the initiative and motivation to seek out and develop their own sources of information and investigations. If they are having difficulty cultivating undercover operations and confidential sources of information, they must execute overt investigations, not only for the purpose of arresting violators of controlled substance laws but also as a method of developing confidential informants for the purpose of initiating covert investigations.

WENET detectives are expected to be capable of conducting any type of investigation and are expected to initiate cases in all areas of covert investigations and are not limited to controlled substance investigations.

### WENET 2009-2010 Fiscal Year

- 60 Investigations
- 18 Search Warrants
- 34 Arrests
- 23 Undercover purchases

#### These Resulted in...

- 116,354 marijuana plants seized
- 231 pounds processed marijuana
- 217 pills of concentrated cannabis
- 55 Jars of Has Oil
- 4753.5 grams of methamphetamines
- 501 grams of Cocaine
- 6,200 MDMA pills
- 6,500 mg of liquid steroids along with other misc pills.





## Narcotics

### SLEDNET

The El Dorado County Sheriff's Office has one deputy assigned to the multi-agency narcotics task force (SLEDNET), or South Lake El Dorado Narcotics Enforcement Team. The duties of this narcotics officer are to manage informants on a regular basis, assist allied agencies with major investigations, conduct drug trafficking and officer safety training to other allied agencies, work in an undercover capacity to purchase narcotics and other illegal items (guns, stolen property, etc.), and assist and inform the public with laws pertaining to narcotics.



### SLEDNET

- 14 Investigations
- 31 Assists to other SLEDNET Agents
- 14 Arrests

#### These Resulted in...

- \$31,637.00
- 15 pounds marijuana
- 60.4 grams of methamphetamines
- 136.8 grams of Cocaine
- Over 1000 pills of oxycontin
- 14.4 grams of psilocybin mushrooms
- 1.8 grams of herion
- 1 illegal poisonous toad
- 2 vehicles
- 1 assault rifle



## Crime Scene Investigations

As violent crime began to increase during the late 1980's and into the early 1990's, it became apparent that the Sheriff's Office had to develop its own Crime Scene Investigative unit to keep up with demands from the public and stay abreast of new and developing forensic procedures.

Today, the El Dorado County Sheriff's Crime Scene Investigative unit (CSI) is comprised of 15 sworn deputy sheriffs. The CSI positions are volunteer collateral assignments and all assigned to this unit are from the patrol division. All members are trained by standards set by the Department of Justice (DOJ).

CSI personnel are responsible for evaluating and processing complex crime scenes, using various types of equipment. Examples of such crime scenes would be homicides, officer involved shootings, sexual assaults, armed robberies, home invasions and property crimes, such as burglaries. The CSI investigators work closely with detectives, especially the homicide unit. Evidence that is developed is then secured and packaged. In many cases, this evidence is then transported to the DOJ for further analysis and testing.

The CSI unit is also responsible for establishing a permanent record and describing the crime scene by writing detailed reports, producing diagrams and using professional photographic techniques. They must also testify in court as expert witnesses.

The El Dorado County Sheriff's CSI unit is expected to respond to all major crimes scenes 24 hours a day. Their arsenal of equipment is carried by a donated used ambulance that has been outfitted to fit their needs. This CSI van carries many items of equipment and chemicals needed to process any scene.

The Sheriff's CSI unit is a proud group of individuals that have worked on all of the major incidents within the county for the past 18 years. Their efforts and expertise have assisted detectives in the successful prosecution of numerous cases over the years.

## Crime and Intelligence Analysis Unit

The Sheriff's Office has one Crime & Intelligence Analyst. Although the analyst is assigned to the Investigative division, support is provided to all areas of the Sheriff's Office. Crime analysis is a systematic and analytical process of "who is doing what to whom." Intelligence analysis is the process of analyzing "Who is doing what with whom," and is used to assist units such as Narcotics and Gangs.

Both processes include reviewing large volumes of information collected by deputies and investigators from witnesses, victims, confidential informants and suspects. This information along with a myriad of other sources is used by the analyst to identify crime patterns and trends. The information is then disseminated in useful products to department staff, the public, and the district attorney. The information provided also allows staff to work more efficiently and effectively by directing resources toward identified problems and developing case leads for the investigators. Many of the products developed are used in court during prosecutions.



The analyst is certified through the California Department of Justice. The Analyst also serves as one of the department's Terrorism Liaison

Officers (TLO). This allows the analyst access to any and all information provided by the Department of Homeland Security to local law enforcement.

Special projects and reports are developed as necessary for the command staff, the Board of Supervisors and the public.

All this allows us to more intelligently plan crime prevention efforts, aid in criminal investigations, increase apprehensions, inform the public, and deploy personnel.



# CUSTODY DIVISION



## Custody Services

The Custody Division's mission is to ensure public safety through the safe and secure incarceration of inmates. The mission is achieved through adherence to employee performance standards, accountability and teamwork. The Custody Division is committed to creating a structured environment to facilitate the inmate's assimilation back into their communities, as well as providing the opportunity for self-improvement through programs and services.

The Placerville and South Lake Tahoe Detention Facilities operate under the authority of the Corrections Standards Authority, as set forth in Title 15 of the California Code of Regulation and Section 6030 of the Penal Code. Both facilities receive male and female inmates that are arrested by local, state, and federal law enforcement agencies, and committed to custody by the courts. Each jail serves as the main booking facility for its particular geographical area.

The Placerville and South Lake Tahoe County jails are Type II facilities and may house both pre-sentenced and post-sentenced male and female defendants. Placerville has a State Board of Corrections rated capacity of 265 beds. South Lake Tahoe jail has rated capacity of 158.

***In 2010 the average daily population for the Placerville facility was 223 and Tahoe facility 113.***

The Placerville and Lake Tahoe jails provide all programs for the care and custody of sentenced inmates and operate defendant work programs as an alternative to incarceration, as well as work programs for those incarcerated. The jails also provides transportation for inmates to court proceedings, medical appointments, and other custodial institutions.

<b>General Facility Totals</b>	
(Includes both Placerville and Tahoe)	
Visitors Processed	23,431
Meals Prepared	395,161
Staff totals	129

<b>Bookings/Release by Facility</b>		
	<b>Placerville</b>	<b>Tahoe</b>
<b>Bookings</b>	4954	2272
<u>Releases</u>		
Bail (bond & cash)	219	764
Time Served	873	306
Cite & Release	461	191
DA book & release	125	11
Work Release	288	178
Charges dropped	234	84
RIs other county	214	17
Trans St prison	413	3
* Misc others not listed		

<b>Medical</b>	
(Includes both Placerville and Tahoe)	
Medications Administered	212,107
Sick calls	5077
Physician sick call	1622
Dental Visits	292
Health Inventory	1259
Mental Health Worker	1067
Psychiatric Contacts	758
Infirmery Days	259
Suicide Attempts	6

<b>Written Reports by Incident Type By Facility</b>		
	<b>Placerville</b>	<b>Tahoe</b>
Verbal	2256	943
Info Only	1234	311
SOB Cell	267	34
Contraband	49	20
Major	266	111
Minor	193	78
Safety Cell	111	44
Suicide Attempt	14	5





## Alternative Sentencing/Work Program

In an effort to defer the increasing cost of housing inmates, the El Dorado County Sheriff's Office offers two options to incarceration.

### Sheriff's Work Program

The Sheriff's Work Program operates in accordance with section 4024.2 of the California Penal Code and under the authority of the El Dorado County Board of Supervisors pursuant to resolution. The program is administered by the Sheriff's Custody Division and is designed to afford low risk offenders the opportunity to satisfy their court sentence without incarceration through work assignments at various sites approved by the Sheriff. Approval to participate in the program is at the discretion of the Sheriff. The court may restrict or deny eligibility.

### Jail Weekender Program

This program is for sentenced inmates who are allowed by court order to serve weekends in jail. Inmates who are serving a sentence may request a release into the weekend program when they have 20 days or less to serve.

Work Program	
Income	\$68,659
Total Worker Days	2,985
Non-Compliance	48
Book and Release	141
Total Bookings	444
Total Applications	349
DNA	31

## Custody Gang Unit

The El Dorado County jail gang unit was started 20 years ago when the correctional officers first observed fights between rival gang members in custody. The unit began working with both the Sacramento County Sheriff's gang officers and the California Department of Justice to learn how to set up a new gang unit and familiarized themselves with the potential legal issues involved.

One correctional lieutenant, one correctional sergeant, and six correctional officers are currently assigned to the gang unit. All of these officers work the gang unit as collateral duty. No one is assigned full time to only working gangs.

### Unit Totals

- Validated over 85 gang members
- Hosted over 36 Joint Meetings  
(a resource for outside LE agencies, Fire Agencies, Schools etc.)
- Provided over 30 hours of Training
- Assisted in Gang Intelligence Gathering.
- Attended 6 Motorcycle Runs\*

\* Included some collaboration with Patrol Gang Unit

The Gang Unit Officers do the following (along with regular duties):

- Interview and validate gang members
- Make updates to CalGang
- Make contact with outside agencies with information that may involve their jurisdictions
- Conduct training for our department staff and numerous outside agencies along with the community
- Issue a gang bulletin on all gang validations and on-going gang issues in our county
- Sponsor monthly meetings sharing intelligence with other agencies and the schools
- Work with outside agencies (at their request) gathering intelligence
- Participate as members of large law enforcement networking organizations and share information regularly with other officers

Our gang officers have been recognized with awards from outside agencies and community organizations, bringing positive attention to our Sheriff's Office.



## Transportation

The Transportation Unit moves jail inmates to local courts, CDCR, PHF Unit, Tahoe jail, medical and dental treatment, the emergency room, and outside agencies, and it extradites inmates from all over the country.

Our duty is to ensure the safe and secure movement of jail inmates while outside the Placerville facility. The Placerville Transportation Unit consists of 1 sergeant, 2 deputy sheriffs, and 5 correctional officers. South Lake Tahoe has 1 deputy sheriff and 1 half-time sergeant.

The safety and security of the inmates, officers and the public is the highest priority of the unit.



## Transportation

### West Slope

- **3996** Inmates to West Slope Courts
- **391** Inmates picked up within the state of California
- **21** Inmates picked up in out of state extraditions
- **106** Inmates to medical appointments
- **586** Inmates transferred between Tahoe and Placerville
- **218** Inmates to and from CDC

### South Lake Tahoe

- **2,341** Inmates to Tahoe Courts
- **16** inmates picked up in CA at CDS prisons
- **25** Inmates picked up in out of state extraditions
- **53** Inmates to medical appointments
- **25** Inmates transferred between Tahoe and Placerville
- **38** court remands

## Court Security/Bailiffs

The Sheriff's Office is responsible for providing security in the four courthouses in the county. This includes the west slope and the South Lake Tahoe areas.

The mission of the Court Security Unit is to ensure the safety and security of the court staff, inmates, and the public as the justice system proceeds with criminal and civil litigation.

## Court Security

### West Slope

#### Main Street Courthouse

- Dept. 1 One full time deputy sheriff
- Dept. 2 One full time deputy sheriff
- Dept. 5 One full time deputy sheriff
- Dept. 6 Over flow dept., extra help deputy sheriff
- 2 Extra help metal Detectors

#### Building C Courthouse

- Metal detector 1 extra help deputy sheriff
- 1 extra help deputy sheriff rover between Depts. 7 & 8

- Dept. 7 One full time deputy sheriff
- Dept. 8 One extra help deputy sheriff

#### Cameron Park Courthouse

- Metal detector 1 extra help deputy sheriff
- Dept. 9 One full time deputy sheriff
- Dept. 10 One on call extra help deputy sheriff

Court Security Supervisor-One full time sheriff's sergeant

### South Lake Tahoe

- Dept. 4, 1 full time deputy sheriff
- Dept. 3, 1 full time deputy sheriff
- Dept. 12, vacant filled with OT
- Metal Detector, staffed with 2 part time deputies





# SPECIAL PROGRAMS/COMMUNITY SERVICE



## STARs

The Sheriff's Team of Active Retirees is a group of senior volunteers who have agreed to assist the El Dorado County Sheriff's Office with their responsibilities and serve the citizens of El Dorado County.

The STAR Program is composed of senior citizens who are familiar with El Dorado County. Before assuming their duties, STAR volunteers complete a three-week course covering law enforcement, communications, safe driving procedures, first aid, drugs and alcohol awareness, STAR patrol techniques, radio procedures, traffic safety with the California Highway Patrol, and weapons awareness, gangs, and traffic control. The current members range in age from 52 to 81. They are a mix of people from all walks of life.

These trained volunteers are used to enhance vital crime prevention services. STAR vehicle units conduct high visibility patrols. Other STARs assist the crime prevention unit, conduct business/home security checks, provide traffic control for accidents and special events, and assist the Sheriff's Office with administrative duties. STARs function as eyes and ears of the Sheriff's Office. Suspicious activity observed is immediately reported to the Sheriff's Office.

The volunteer approach is termed passive law enforcement and is used successfully in many cities in the state. Putting extra people on neighborhood

and business patrols and into the paperwork side of the Sheriff's Office frees deputies for patrol service.

## Placerville/South Lake Tahoe

The El Dorado County Sheriff's Office began the STAR program in 1994 with divisions in both Placerville and South Lake Tahoe.

The STARs have been trained to conduct FREE disaster preparation training in your home. During this visit the STARs will talk about how to make your disaster preparation kit including how to take care of your pets in a disaster.

A STAR conducts patrol duties to check on vacation homes as requested by the owner to deter and detect crime, bike patrol during the summer, and foot patrol at ski resorts in the winter. STAR members are also involved in our community in a variety of programs such as Citizen Advocates for the Protection of the Elderly (CAPE). The CAPE program consists of STAR volunteers visiting homebound and/or disabled adults in our community that may not receive visitation from other people.

Some of the other STAR activities are educational booths at the South Lake Tahoe Air Show and the Fire Festival each year. The STARs volunteer each year to support the Drug Store Project, the Art Festival, and the Every 15 minutes Drunk Driver Program.

### SOME HIGHLIGHTS

The STARs performed **over 7000 Hours** of Vacation Checks.

They worked **over 100** specialized Community Events.

They put in **over 200 hours** of Graffiti Abatement.

They performed **over 100 hours** of C.A.P.E. Visitations.

They assisted Vehicle Abatement with **over 6000 hours**.

They spent of **8000 hours** making "You Are Not Alone" (Yana) Calls to Shut-Ins.

**OUTSTANDING!**

**And that's not all folks...**



## ***Citizen's Academy***

The El Dorado County Sheriff's Office offers the Citizens Law Enforcement Academy at least semi-annually. This Academy familiarizes El Dorado County residents with many aspects of law enforcement and the role the Sheriff's Office plays in the community

The Sheriff's Office has instituted the concepts of Community Oriented Policing and Problem Solving (COPPS). The goal of the COPPS program is to open a positive line of communication with our citizens and to involve the community in some of the decisions regarding law enforcement.

By attending the Academy, citizens will develop a better understanding of the guidelines under which an officer functions and why officers handle situations the way they do. Also discussed is the role of law enforcement and how members of the community can come together to address serious crime and social issues.

## ***Explorers***

The El Dorado County Sheriff's Office offers Law Enforcement Explorer Post #457 to Youth in the Community. The program is part of Learning for Life's career education program for young men and women who are 15 (can be 14 if you have completed the eighth grade) through 20 years old.

The purpose of the Explorer Program is to provide experiences that help young people mature and to prepare them to become responsible and caring adults. Explorers are ready to investigate the meaning of interdependence in their personal relationships and communities.

Exploring is based on a unique and dynamic relationship between youth and the organizations in their communities. Local community organizations initiate a specific Explorer post by matching their people and program resources to the interests of young people in the community.

The result of the Sheriff's Office program of activities is to help youths pursue, grow and develop their special interest in law enforcement.

### **Citizen's Academy**

- Is 12 weeks long, one night a week.
- We Host 2-3 Academies a year.
- It has 25—30 students
- Over 30 staff members provide the training.



### **Explorer Post #457**

- Explorer Post #457 has over 15 Explorers
- 6 Advisors that are Sheriff's Office Staff.
- They received over 300 hours training.
- They worked over 25 community events in 2010.
- They attended three weeklong Competitions/National Trainings.



## ***El Dorado County Multi-Disciplinary Team (MDT)***

The Multi Disciplinary Team (MDT) is a cooperative effort of local law enforcement and mental health professionals with the goal of providing a mechanism for early intervention on behalf of individuals suffering from mental disease. The team provides a platform for better and more open dialogue among those who interact with the mentally unstable. The team's goal is to identify individuals who are exhibiting behaviors that may result in future law enforcement contacts and attempt to get them the help they need.

The MDT continues to succeed. The team meets on a monthly basis and handles about 12 cases each month. The team has proven effective in a number of cases that were resolved prior to crisis and resulted in lower calls for service, increased officer safety and increased public safety.

## ***Autism Registration***

The El Dorado County Sheriff's Office in conjunction with other County and State agencies has provided the autism registration form to members of El Dorado County living with a child or adult with autism.

The information provided will be utilized to identify the residence and the individual with autism. This information will be entered into the El Dorado County Sheriff's Office dispatch computer system. This allows County dispatchers to access the provided information in the event we receive a call for service from the identified residence.

The El Dorado County Sheriff's Office is committed to serving our communities with the highest level of service, compassion and understanding. Providing this information for our deputies will allow them to understand the situation thoroughly and provide the highest level of service during a time of need.

The El Dorado County Sheriff's Office understands HIPAA regulations and the right to medical privacy. The information provided will be entered into the computer system and the form will be deleted. The information will be accessed under a right to know and need to know basis. The information is intended to serve the autistic community and their families in a positive manner, not in a manner to highlight their condition.

The El Dorado County Sheriff's Office encourages anyone with a member in their household to register and update the information on a yearly basis. This will allow the El Dorado County Sheriff's Office the ability to maintain current records and continued service. Pursuant to HIPAA regulations 164.512(f) and 164.512(j).

In 2010 this program showed continued success with community members registering family members with the program. The program itself has been a pilot for other agencies in the surrounding areas.



## *Lake Tahoe Secret Witness Program*

### **Program History**

In 1980 the Secret Witness Program was formed as a result of the death of teenager Richard E. Swanson. Richard was killed during a robbery of a South Lake Tahoe gas station. Businesses and citizens raised nearly \$10,000 as reward for information leading to an arrest of Richard's killer. This tragedy created the base for what has become a very successful law enforcement tool in South Lake Tahoe and surrounding communities.

### **Purpose:**

Because Sheriff's Deputies are often unable to know everything that is going on in the community, citizen participation in law enforcement and crime prevention is crucial. The Secret Witness Program is designed to provide incentives to community members for becoming involved in crime prevention and resolution. Citizens are offered opportunities to make the community a safer place to live by becoming involved in crime prevention. Besides making a positive contribution to the community, individuals can enjoy some monetary reward for their efforts thanks to the Secret Witness Program.

### **How the Program Works:**

The Secret Witness Program relies on the anonymous tips of community members. Any individual can make an anonymous phone call to a 24-hour, 7-days a week hotline and provide the information.

The information is then sent to the law enforcement agency responsible for acting on the tip. The agency checks up on the tip, and if the tip leads to an arrest of a criminal then the individual who offered the tip is contacted and offered a reward. The rewards vary depending on the value of the information. The more valuable the information, the bigger the reward.

Reward money is drawn from a pot that is funded by donations from local businesses and individuals.



## **Sheriff's Posse**

The Sheriff's Posse of El Dorado County is a 501.3c charitable organization and is composed of a group of citizens in El Dorado County organized to raise funds to support Sheriff's Deputies and their families in times of need. Sheriff's Posse members are not peace officers and are not sworn members of the Sheriff's Office.

The Sheriff's Posse sponsors an annual barbeque for all personnel of the Sheriff's Office, their family members, and Posse members.

The Sheriff's Posse contributes funds to help defray the cost of equipment as a welcome to new officers to the Sheriff's Office.

### **Mission Statement**

The members of the El Dorado County Sheriff's Posse, in assembly, do hereby recognize their mission to support members and their families of the El Dorado County Sheriff's Office both enthusiastically, financially, and in any other capacity deemed appropriate in time of need. One of the basic goals is to provide immediate financial assistance to a spouse in the event an officer is killed in the line of duty.

The Posse is comprised of approximately 100 members.

### **2010 Donations made by the Posse**

- \$2000 Peer Support
- \$2000 Deputy Damian Frisby to assist in the purchase of his K-9 partner Koda
- \$2500 Sierra Law Enforcement Chaplaincy.
- \$12,000 budgeted for the Posse Picnic open to all SO employees and families at no cost to the employees.

## **Chaplaincy Program**

The Sierra Law Enforcement Chaplaincy (SLEC) works to help law enforcement officers and staff, victims of crime and the citizens of El Dorado County. Service is provided 24/7 by SLEC and its volunteer staff.



Our primary mission is to respond to crises and we do this 24 hours a day, seven days a week. We respond to calls for assistance with suicide prevention, death notifications and counseling.

SLEC staff conduct ride-a-longs on a regular basis to maintain positive relationships with deputies and detectives. In addition, SLEC staff works with dispatchers and non-sworn staff. We also provide training to law enforcement staff on a wide variety of topics related to law enforcement.

### **Sierra Law Enforcement Chaplaincy**

- 76 Critical Responses
- 101 Ride-a-longs
- 197 Briefings attended
- 341 Counseling sessions given
- 44 Funerals/Memorials attended
- 43 Walk-a-longs
- 5 Weddings attended
- 25 Ride-a-longs by reserve chaplains
- 22 emergency call-outs by reserve chaplains





# SHERIFF'S OFFICE AT WORK

# SHERIFF'S OFFICE AT WORK



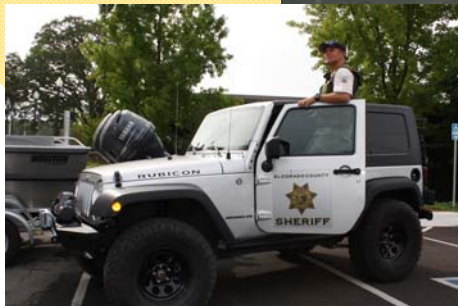
2010 ANNUAL REPORT



# SHERIFF'S OFFICE AT WORK



2010 ANNUAL REPORT





## Cases in the National News Spotlight



**Patricia Ann Presba & Jaime Ramos convicted of killing Ronald Presba.**



**Jaycee Lee Dugard**



**Kidnapped for 18 years by Phillip and Nancy Garrido.**



**Suspected Serial Murderer Joseph Nissensohn Featured on AMW.**



**David Zanon Sentenced to Death in El Dorado County for killing CHP Officer Douglas "Scott" Russell.**

**Main Office**  
300 Fair Lane  
Placerville, CA  
95667  
(530) 621-5655

**South Lake Tahoe**  
1360 Johnson Blvd.  
#102  
South Lake Tahoe,  
CA 96150  
(530) 573-3000

**Investigations**  
471 Pierroz,  
Placerville, CA  
95667

[WWW.EDSO.ORG](http://WWW.EDSO.ORG)

The Crime Analysis Unit would like to thank all those that contributed to this 2010 Annual Report.